

ATG4D polyclonal antibody

Catalog: BS70951

Host: Rabbit

Reactivity: Human, Mouse, Rat

BackGround:

Atg4D (autophagy-related gene 4D), also known as APG4D or AUTL4, is a 474 amino acid protein that localizes to the cytoplasm and belongs to the C-54 family of cysteine proteases. Expressed predominately in skeletal muscle, but also present in testis, Atg4D functions as a cysteine protease that is required for autophagy and functions to specifically cleave the C-terminal region of target proteins, thereby allowing the target proteins to bind to autophagosomes. The enzymatic activity of Atg4D is inhibited by Nethylmaleimide, a thiol reactive compound that is capable of modifying cystine residues in proteins and peptides.

Product:

Rabbit IgG, 1mg/ml in PBS with 0.02% sodium azide, 50% glycerol, pH7.2

Molecular Weight:

~ 53 kDa

Swiss-Prot:

Q86TL0

Purification&Purity:

The antibody was affinity-purified from rabbit antiserum by affinity-chromatography using epitope-specific immunogen and the purity is > 95% (by SDS-PAGE).

Applications:

WB 1:500 - 1:2000

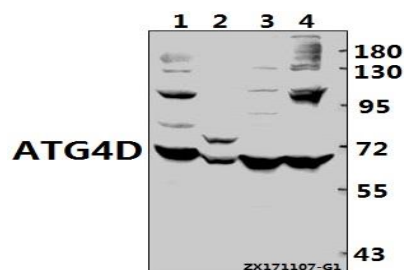
Storage&Stability:

Store at 4 °C short term. Aliquot and store at -20 °C long term. Avoid freeze-thaw cycles.

Specificity:

ATG4D polyclonal antibody detects endogenous levels of ATG4D protein.

DATA:



Western blot (WB) analysis of ATG4D pAb at 1:1000 dilution

Lane1: The Lung tissue lysate of Mouse(40ug)

Lane2: The Lung tissue lysate of Rat(40ug)

Lane3: H1792 whole cell lysate(40ug)

Lane4: SGC7901 whole cell lysate(40ug)

Note:

For research use only, not for use in diagnostic procedure.

Bioworld Technology, Inc.

Add: 1660 South Highway 100, Suite 500 St. Louis Park, MN 55416, USA.

Email: info@bioworld.com

Tel: 6123263284

Fax: 6122933841

Bioworld technology, co. Ltd.

Add: No 9, weidi road Qixia District Nanjing, 210046, P. R. China.

Email: info@biogot.com

Tel: 0086-025-68037686

Fax: 0086-025-68035151