

**ROBO4 polyclonal antibody**

Catalog: BS71358

Host: Rabbit

Reactivity: Human

**BackGround:**

Roundabout homolog 4, also known as magic roundabout and ROBO4 is a member of the immunoglobulin super-family and ROBO family. ROBO4 is specifically expressed in endothelial cells. It is expressed at sites of angiogenesis in different tumor types. ROBO4 contains two fibronectin type-III domains and two Ig-like C2-type (immunoglobulin-like) domains. ROBO4 is the fourth identified member of the roundabout receptor family. It is the only Robo family member expressed in primary endothelial cells and that application of Slit inhibits their migration. ROBO4 is predominantly expressed in embryonic or tumor vascular endothelium and is considered important for vascular development and as a candidate tumor endothelial marker. ROBO4 is a bona fide member of the Robo family and may provide a repulsive cue to migrating endothelial cells during vascular development. ROBO4 is a receptor for Slit proteins, at least for SLIT2, and seems to be involved in angiogenesis and vascular patterning. ROBO4 may mediate the inhibition of primary endothelial cell migration by Slit proteins. Activating ROBO4 may have broad therapeutic application in diseases characterized by excessive angiogenesis and/or vascular leak.

**Product:**

1mg/ml in PBS with 0.02% sodium azide, 50% glycerol, pH7.2

**Molecular Weight:**

130kDa

**Swiss-Prot:**

Q8WZ75

**Purification&Purity:**

The antibody was affinity-purified from rabbit antiserum by affinity-chromatography using epitope-specific immunogen and the purity is > 95% (by SDS-PAGE).

**Applications:**

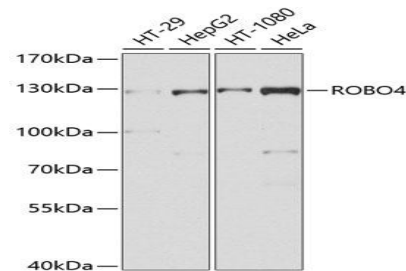
WB, 1:500 - 1:2000

**Storage&Stability:**

Store at 4 °C short term. Aliquot and store at -20 °C long term. Avoid freeze-thaw cycles.

**Category:**

Polyclonal Antibodies

**DATA:**

Western blot analysis of extracts of various cell lines, using ROBO4 antibody at 1:1000 dilution. Secondary antibody: HRP Goat Anti-Rabbit IgG at 1:10000 dilution. Lysates/proteins: 25ug per lane. Blocking buffer: 3% nonfat dry milk in TBST. Detection: ECL Basic Kit. Exposure time: 30s.

**Note:**

For research use only, not for use in diagnostic procedure.

**Bioworld Technology, Inc.**

Add: 1660 South Highway 100, Suite 500 St. Louis Park, MN 55416, USA.

Email: [info@bioworld.com](mailto:info@bioworld.com)

Tel: 6123263284

Fax: 6122933841

**Bioworld technology, co. Ltd.**

Add: No 9, weidi road Qixia District Nanjing, 210046, P. R. China.

Email: [info@biogot.com](mailto:info@biogot.com)

Tel: 0086-025-68037686

Fax: 0086-025-68035151