

CRYGC polyclonal antibody

Catalog: BS71460

Host: Rabbit

Reactivity: Human, Mouse, Rat

BackGround:

This gene encodes a member of the beta/gamma-crystallin family of proteins. Crystallins constitute the major proteins of vertebrate eye lens and maintain the transparency and refractive index of the lens. This gene and several family members are present in a gene cluster on chromosome 2. Mutations in this gene have been shown to cause multiple types of cataract, including Coppock-like cataract and zonular pulverulent cataract, among others.

Product:

1mg/ml in PBS with 0.02% sodium azide, 50% glycerol, pH7.2

Molecular Weight:

17kDa

Swiss-Prot:

P07315

Purification&Purity:

The antibody was affinity-purified from rabbit antiserum by affinity-chromatography using epitope-specific immunogen and the purity is > 95% (by SDS-PAGE).

Applications:

WB, 1:1000 - 1:2000 | IF/ICC, 1:50 - 1:200

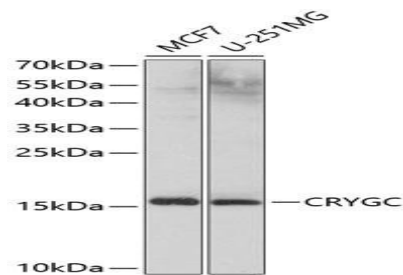
Storage&Stability:

Store at 4 °C short term. Aliquot and store at -20 °C long

term. Avoid freeze-thaw cycles.

Category:

Polyclonal Antibodies

DATA:

Western blot analysis of extracts of various cell lines, using CRYGC antibody at 1:1000 dilution. Secondary antibody: HRP Goat Anti-Rabbit IgG at 1:10000 dilution. Lysates/proteins: 25ug per lane. Blocking buffer: 3% nonfat dry milk in TBST. Detection: ECL Basic Kit. Exposure time: 5s.

Immunofluorescence analysis of L929 cells using CRYGC antibody at dilution of 1:100. Blue: DAPI for nuclear staining.

Immunofluorescence analysis of C6 cells using CRYGC antibody at dilution of 1:100. Blue: DAPI for nuclear staining.

Note:

For research use only, not for use in diagnostic procedure.

Bioworld Technology, Inc.

Add: 1660 South Highway 100, Suite 500 St. Louis Park, MN 55416, USA.

Email: info@bioworld.com

Tel: 6123263284

Fax: 6122933841

Bioworld technology, co. Ltd.

Add: No 9, weidi road Qixia District Nanjing, 210046, P. R. China.

Email: info@biogot.com

Tel: 0086-025-68037686

Fax: 0086-025-68035151