

ARL8B polyclonal antibody

Catalog: BS71824

Host: Rabbit

Reactivity: Human, Mouse

BackGround:

Small GTPase which cycles between active GTP-bound and inactive GDP-bound states. In its active state, binds to a variety of effector proteins playing a key role in the regulation of lysosomal positioning which is important for nutrient sensing, natural killer cell-mediated cytotoxicity and antigen presentation. Along with its effectors, orchestrates lysosomal transport and fusion. Localizes specifically to lysosomal membranes and mediates anterograde lysosomal motility by recruiting PLEKHM2, which in turn recruits the motor protein kinesin-1 on lysosomes. Required for lysosomal and cytolytic granule exocytosis. Critical factor involved in NK cell-mediated cytotoxicity. Drives the polarization of cytolytic granules and microtubule-organizing centers (MTOCs) toward the immune synapse between effector NK lymphocytes and target cells. In neurons, mediates the anterograde axonal long-range transport of presynaptic lysosome-related vesicles required for presynaptic biogenesis and synaptic function (By similarity). Also acts as a regulator of endosome to lysosome trafficking pathways of special significance for host defense. Regulates cargo trafficking to lysosomes by binding to PLEKHM1 and recruiting the HOPS subunit VPS41, resulting in functional assembly of the HOPS complex on lysosomal membranes. Plays an important role in cargo delivery to lysosomes for antigen presentation and microbial killing.

Product:

1mg/ml in PBS with 0.02% sodium azide, 50% glycerol, pH7.2

Molecular Weight:

21kDa

Swiss-Prot:

Q9NVJ2

Purification&Purity:

The antibody was affinity-purified from rabbit antiserum by affinity-chromatography using epitope-specific immunogen and the purity is > 95% (by SDS-PAGE).

Applications:

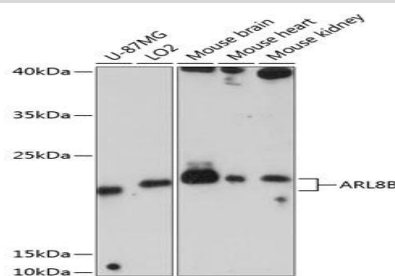
WB, 1:500 - 1:3000 | IF/ICC, 1:50 - 1:200

Storage&Stability:

Store at 4 °C short term. Aliquot and store at -20 °C long term. Avoid freeze-thaw cycles.

Category:

Polyclonal Antibodies

DATA:

Western blot analysis of extracts of various cell lines, using ARL8B antibody at 1:3000 dilution. Secondary antibody: HRP Goat Anti-Rabbit IgG at 1:10000 dilution. Lysates/proteins: 25ug per lane. Blocking buffer: 3% nonfat dry milk in TBST. Detection: ECL Enhanced Kit. Exposure time: 30s.

Confocal immunofluorescence analysis of U2OS cells using ARL8B Polyclonal Antibody at dilution of 1:100. Blue: DAPI for nuclear staining.

Note:

For research use only, not for use in diagnostic procedure.

Bioworld Technology, Inc.

Add: 1660 South Highway 100, Suite 500 St. Louis Park, MN 55416, USA.

Email: info@bioworld.com

Tel: 6123263284

Fax: 6122933841

Bioworld technology, co. Ltd.

Add: No 9, weidi road Qixia District Nanjing, 210046, P. R. China.

Email: info@biogot.com

Tel: 0086-025-68037686

Fax: 0086-025-68035151