

CYP2B6 polyclonal antibody

Catalog: BS72050

Host: Rabbit

Reactivity: Human, Mouse

BackGround:

CYP2B6 (cytochrome P450 2B6) is a 491 amino acid protein encoded by the human gene CYP2B6. CYP genes are highly polymorphic and can affect individual drug response and adverse reactions to a great extent. The CYP2B6 gene product, along with a few other CYP gene products, are highly susceptible to variation due to several copy number variants (CNV), missense mutations, insertions and deletions, and gene expression mutations. There are 57 active CYP genes and 58 pseudogenes known in the human genome. In liver microsomes, CYP2B6 is involved in an NADPH-dependent electron transport pathway. It acts to oxidize a variety of structurally unrelated compounds, including steroids, fatty acids and xenobiotics. CYP2B6 is expressed in liver, lung and heart and can be induced by phenobarbital.

Product:

0.01M TBS(pH7.4) with 1% BSA, 0.03% Proclin300 and 50% Glycerol.

Molecular Weight:

~ 56 kDa

Swiss-Prot:

P20813

Purification&Purity:

The antibody was affinity-purified from rabbit antiserum by affinity-chromatography using epitope-specific immunogen and the purity is > 95% (by SDS-PAGE).

Applications:

WB 1:500-2000

ELISA 1:5000-10000

IHC 1:100-500

IF 1:100-500

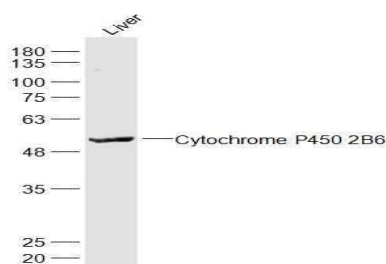
Storage&Stability:

Store at 4 °C short term. Aliquot and store at -20 °C long term. Avoid freeze-thaw cycles.

Specificity:

CYP2B6 polyclonal antibody detects endogenous levels of CYP2B6 protein.

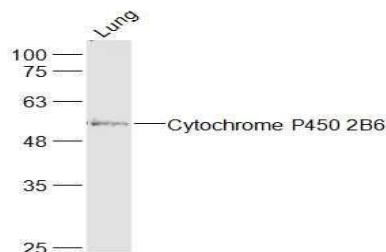
DATA:



Sample:

Liver (Mouse) Lysate at 40 ug

Primary: Anti-Cytochrome P450 2B6 at 1/1000 dilution



Sample:

Lung (Mouse) Lysate at 40 ug

Primary: Anti-Cytochrome P450 2B6 at 1/1000 dilution

Note:

For research use only, not for use in diagnostic procedure.

Bioworld Technology, Inc.

Add: 1660 South Highway 100, Suite 500 St. Louis Park, MN 55416, USA.

Email: info@bioworld.com

Tel: 6123263284

Fax: 6122933841

Bioworld technology, co. Ltd.

Add: No 9, weidi road Qixia District Nanjing, 210046, P. R. China.

Email: info@biogot.com

Tel: 0086-025-68037686

Fax: 0086-025-68035151