

C18orf8 polyclonal antibody

Catalog: BS72772

Host: Rabbit

Reactivity: Human, Mouse, Rat

BackGround:

This gene encodes a colon cancer associated protein.

Product:

Rabbit IgG, 1mg/ml in PBS with 0.02% sodium azide, 50% glycerol, pH7.2

Molecular Weight:

75kDa

Swiss-Prot:

Q96DM3

Purification&Purity:

The antibody was affinity-purified from rabbit antiserum by affinity-chromatography using epitope-specific immunogen and the purity is > 95% (by SDS-PAGE).

Applications:

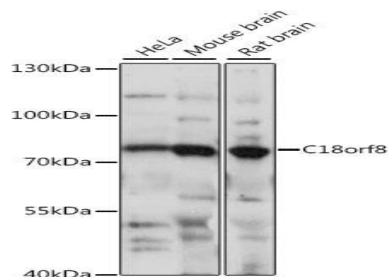
WB 1:500 - 1:2000
IHC 1:50 - 1:200
IF 1:50 - 1:200

Storage&Stability:

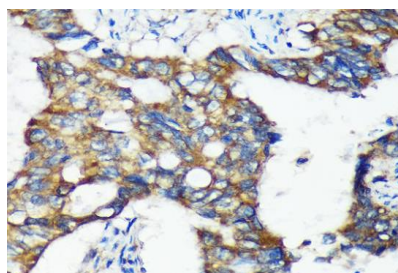
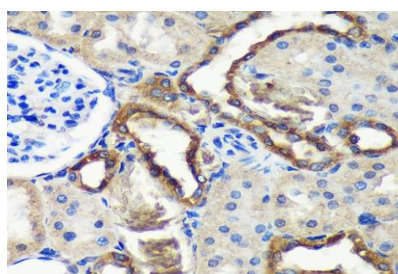
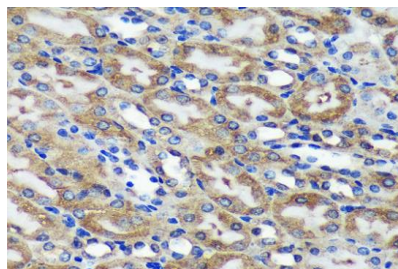
Store at 4 °C short term. Aliquot and store at -20 °C long term. Avoid freeze-thaw cycles.

Specificity:

C18orf8 polyclonal antibody detects endogenous levels of C18orf8 protein.

DATA:

Western blot analysis of extracts of various cell lines, using C18orf8 antibody.

**Note:**

For research use only, not for use in diagnostic procedure.

Bioworld Technology, Inc.

Add: 1660 South Highway 100, Suite 500 St. Louis Park, MN 55416, USA.

Email: info@bioworld.com

Tel: 6123263284

Fax: 6122933841

Bioworld technology, co. Ltd.

Add: No 9, weidi road Qixia District Nanjing, 210046, P. R. China.

Email: info@biogot.com

Tel: 0086-025-68037686

Fax: 0086-025-68035151