

## DMP1 polyclonal antibody

Catalog: BS7995

Host: Rabbit

Reactivity: Human, Mouse

### BackGround:

DMP-1 (dentin matrix protein-1), also known as dentin matrix acidic phosphoprotein-1, is a member of the small integrin ligand N-linked glycoprotein family. It is important for the mineralization of bone and dentin. DMP-1 is expressed in bone, tooth and hypertrophic cartilage. It is synthesized by preosteoblasts and contains a large number of acidic domains. DMP-1 localizes to the nucleus of undifferentiated osteoblasts where it functions as a transcriptional regulator for osteoblast-specific gene activation and induces osteoblast differentiation. During osteoblast maturation, DMP-1 undergoes a conformational change and becomes phosphorylated by casein kinase II in response to an influx of calcium ions to the nucleus. DMP-1 is then exported to the extracellular matrix (ECM) where it regulates the nucleation of hydroxyapatite and the formation of calcified tissue. DMP-1 is proteolytically processed into N- and C-terminal fragments in the ECM of bone and dentin. The protein has also been identified in bone as a high molecular weight proteoglycan comprised of the N-terminal DMP-1 fragment and chondroitin sulfate. The loss of DMP-1 can result in hypomineralized bone.

### Product:

Rabbit IgG, 1mg/ml in PBS with 0.02% sodium azide, 50% glycerol, pH7.2

### Molecular Weight:

~ 68 kDa

### Swiss-Prot:

Q13316

### Purification&Purity:

The antibody was affinity-purified from rabbit antiserum by affinity-chromatography using epitope-specific immunogen and the purity is > 95% (by SDS-PAGE).

### Applications:

WB 1:500 - 1:2000

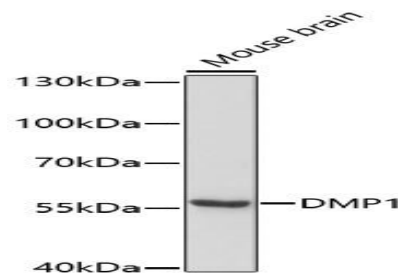
### Storage&Stability:

Store at 4 °C short term. Aliquot and store at -20 °C long term. Avoid freeze-thaw cycles.

### Specificity:

DMP1 polyclonal antibody detects endogenous levels of DMP1 protein.

### DATA:



WesternBlot (WB) analysis of DMP1 polyclonal antibody

### Note:

For research use only, not for use in diagnostic procedure.

### Bioworld Technology, Inc.

Add: 1660 South Highway 100, Suite 500 St. Louis Park, MN 55416, USA.

Email: [info@bioworld.com](mailto:info@bioworld.com)

Tel: 6123263284

Fax: 6122933841

### Bioworld technology, co. Ltd.

Add: No 9, weidi road Qixia District Nanjing, 210046, P. R. China.

Email: [info@biogot.com](mailto:info@biogot.com)

Tel: 0086-025-68037686

Fax: 0086-025-68035151