

## CFDP1 polyclonal antibody

Catalog: BS8132

Host: Rabbit

Reactivity: Human, Mouse, Rat

### BackGround:

CFDP1 (Craniofacial development protein 1), also known as Bucentaur and CP27, is a 299 amino acid protein that is involved in embryogenesis and normal cell function. When treated with CFDP1 peptide, mouse molar teeth increase in size, whereas treating cells with antibodies against CFDP1 shows an increase in the number of apoptotic cells and gradual tooth disintegration. CFDP1 is highly expressed in developing mouse teeth and is expressed at lower levels in liver, lung and heart. The gene encoding CFDP1 maps to human chromosome 16, in a region that has been associated with inherited craniofacial diseases, such as fanconi anemia type A. There are two isoforms of CFDP1 that are produced as a result of alternative splicing events.

### Product:

Rabbit IgG, 1mg/ml in PBS with 0.02% sodium azide, 50% glycerol, pH7.2

### Molecular Weight:

~ 34 kDa

### Swiss-Prot:

Q9UEE9

### Purification&Purity:

The antibody was affinity-purified from rabbit antiserum

by affinity-chromatography using epitope-specific immunogen and the purity is > 95% (by SDS-PAGE).

### Applications:

WB 1:500 - 1:2000

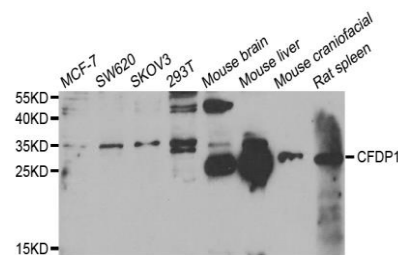
### Storage&Stability:

Store at 4 °C short term. Aliquot and store at -20 °C long term. Avoid freeze-thaw cycles.

### Specificity:

CFDP1 polyclonal antibody detects endogenous levels of CFDP1 protein.

### DATA:



WesternBlot (WB) analysis of CFDP1 polyclonal antibody

### Note:

For research use only, not for use in diagnostic procedure.

### Bioworld Technology, Inc.

Add: 1660 South Highway 100, Suite 500 St. Louis Park, MN 55416, USA.

Email: [info@bioworld.com](mailto:info@bioworld.com)

Tel: 6123263284

Fax: 6122933841

### Bioworld technology, co. Ltd.

Add: No 9, weidi road Qixia District Nanjing, 210046, P. R. China.

Email: [info@biogot.com](mailto:info@biogot.com)

Tel: 0086-025-68037686

Fax: 0086-025-68035151