

## C4BPB polyclonal antibody

Catalog: BS8157

Host: Rabbit

Reactivity: Human, Mouse, Rat

### BackGround:

Complement component 4-binding protein (C4BP) is a plasma glycoprotein that inhibits the classical pathway of complement activation, which is mediated through antibody targeting of foreign antigen. Structurally, C4BP is a disulfide linked, multimeric protein that is composed of seven  $\alpha$  chains and one  $\beta$  chain. C4BP functions as a co-factor for C3 $\beta$  inactivator in the cleavage of C3 $\beta$ , and accelerates the decay of C4 $\beta$ C2 $\alpha$  (C3 convertase) by acting as a cofactor in the cleavage of C4 $\beta$  by factor I. Streptococcal strains that express Ig-binding cell surface molecules, which are members of the M protein family, can bind to overlapping C4 $\beta$  binding sites in C4BP and therefore, interfere with the classical pathway of complement activation. Bacteria-bound C4BP may be an evolved mechanism that downregulates complement activation in the bacterial host microenvironment, thereby reducing the occurrences of bacterial opsonization and phagocytosis.

### Product:

Rabbit IgG, 1mg/ml in PBS with 0.02% sodium azide, 50% glycerol, pH7.2

### Molecular Weight:

~ 45 kDa

### Swiss-Prot:

P20851

### Purification&Purity:

The antibody was affinity-purified from rabbit antiserum by affinity-chromatography using epitope-specific immunogen and the purity is > 95% (by SDS-PAGE).

### Applications:

WB: 1:500~1:2000

IHC: 1:50~1:200

IF: 1:50~1:100

### Storage&Stability:

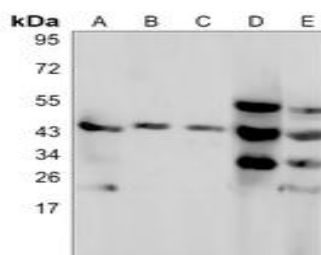
Store at 4 °C short term. Aliquot and store at -20 °C long

term. Avoid freeze-thaw cycles.

### Specificity:

C4BPB polyclonal antibody detects endogenous levels of C4BPB protein.

### DATA:



Western blot (WB) analysis of C4BPB polyclonal antibody at 1:500 dilution

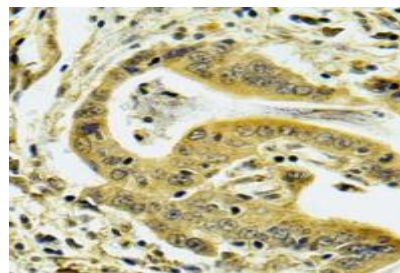
LaneA:HEK293T whole cell lysate(30ug)

LaneB:H1688 whole cell lysate(30ug)

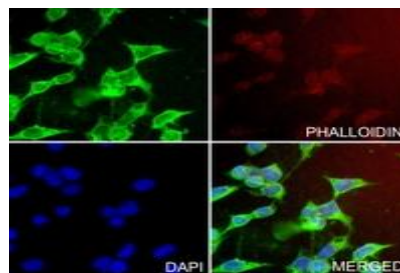
LaneC:MCF-7 whole cell lysate(30ug)

LaneD:The Liver tissue lysate of Mouse(30ug)

LaneE:The Liver tissue lysate of Rat(30ug)



Immunohistochemical analysis of C4BP beta staining in human colorectal cancer formalin fixed paraffin embedded tissue section.



Immunofluorescent analysis of C4BP beta staining in HEK293T cells.

### Bioworld Technology, Inc.

Add: 1660 South Highway 100, Suite 500 St. Louis Park, MN 55416, USA.

Email: [info@bioworld.com](mailto:info@bioworld.com)

Tel: 6123263284

Fax: 6122933841

### Bioworld technology, co. Ltd.

Add: No 9, weidi road Qixia District Nanjing, 210046, P. R. China.

Email: [info@biogot.com](mailto:info@biogot.com)

Tel: 0086-025-68037686

Fax: 0086-025-68035151



## PRODUCT DATA SHEET

Bioworld Technology, Inc.

Note:

For research use only, not for use in diagnostic procedure.

---

### Bioworld Technology, Inc.

Add: 1660 South Highway 100, Suite 500 St. Louis Park,  
MN 55416, USA.

Email: [info@bioworld.com](mailto:info@bioworld.com)

Tel: 6123263284

Fax: 6122933841

### Bioworld technology, co. Ltd.

Add: No 9, weidi road Qixia District Nanjing, 210046,  
P. R. China.

Email: [info@biogot.com](mailto:info@biogot.com)

Tel: 0086-025-68037686

Fax: 0086-025-68035151