

CLIC1 polyclonal antibody

Catalog: BS8158

Host: Rabbit

Reactivity: Human, Mouse, Rat

Background:

Chloride intracellular channel 1 (CLIC1), also referred to as NCC27, is a member of the highly conserved family of chloride ion channels that function in both soluble and integral membrane forms. CLIC1 is a monomeric protein that

contains a redox-active site similar to glutaredoxin; it functions as an anionselective channel. CLIC1 forms a dimer when oxidized and is then able to form chloride ion channels in bilayers and vesicles, whereas a reducing environment

prevents this from occurring. Insulin concentration also plays a role in CLIC1 regulation, and the hormone may cause a subnuclear relocalization of CLIC1. CLIC1 is associated with macrophage activation; a downregulation of CLIC1 function prevents TNF α release induced by β -Amyloid protein (A- β) stimulation. This suggests a role for CLIC1 in several neurodegenerative processes, such as Alzheimer's disease, a syndrome characterized by an accumulation of A- β .

Product:

Rabbit IgG, 1mg/ml in PBS with 0.02% sodium azide, 50% glycerol, pH7.2

Molecular Weight:

~ 27 kDa

Swiss-Prot:

O00299

Purification&Purity:

The antibody was affinity-purified from rabbit antiserum by affinity-chromatography using epitope-specific immunogen and the purity is > 95% (by SDS-PAGE).

Applications:

WB 1:500 - 1:1000

IF/ICC 1:50 - 1:200

IP 1:50 - 1:200

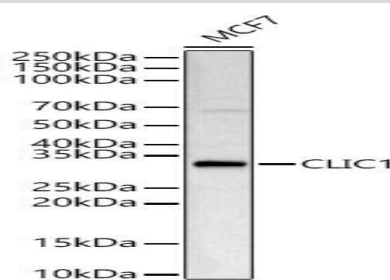
Storage&Stability:

Store at 4 °C short term. Aliquot and store at -20 °C long term. Avoid freeze-thaw cycles.

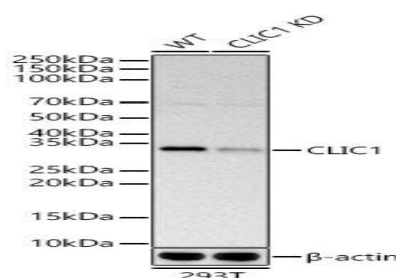
Specificity:

CLIC1 polyclonal antibody detects endogenous levels of CLIC1 protein.

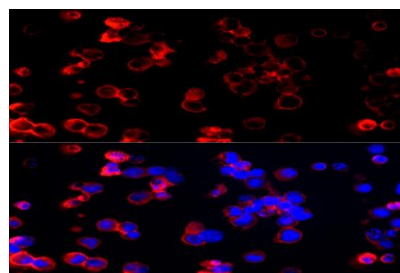
DATA:



Western blot analysis of lysates from MCF7 cells, using CLIC1 pAb at 1:1000 dilution.



Western blot analysis of lysates from wild type(WT) and CLIC1 knockdown (KD) HeLa cells, using CLIC1 pAb at 1:1000 dilution.



Immunofluorescence analysis of K-562 cells using CLIC1 pAb at dilution of 1:200 (40x lens).

Bioworld Technology, Inc.

Add: 1660 South Highway 100, Suite 500 St. Louis Park, MN 55416, USA.

Email: info@bioworld.com

Tel: 6123263284

Fax: 6122933841

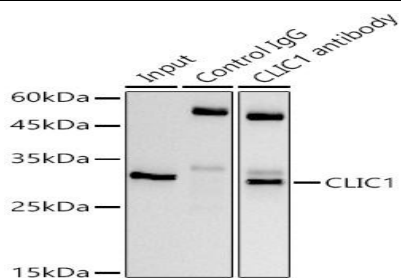
Bioworld technology, co. Ltd.

Add: No 9, weidi road Qixia District Nanjing, 210046, P. R. China.

Email: info@biogot.com

Tel: 0086-025-68037686

Fax: 0086-025-68035151



Immunoprecipitation analysis of 300 μ g extracts of HeLa cells using 3 μ g CLIC1 pAb.

Note:

For research use only, not for use in diagnostic procedure.

Bioworld Technology, Inc.

Add: 1660 South Highway 100, Suite 500 St. Louis Park,
MN 55416, USA.

Email: info@bioworld.com

Tel: 6123263284

Fax: 6122933841

Bioworld technology, co. Ltd.

Add: No 9, weidi road Qixia District Nanjing, 210046,
P. R. China.

Email: info@biogot.com

Tel: 0086-025-68037686

Fax: 0086-025-68035151