

CLEC3B polyclonal antibody

Catalog: BS8202

Host: Rabbit

Reactivity: Human, Mouse, Rat

BackGround:

Tetranectin is a homotrimeric glycoprotein present in plasma and various tissue locations that binds to calcium, heparin, and plasminogen kringle 4. Tetranectin may play a prominent role in tissue remodeling as well as in the regulation of proteolytic processes via its binding and indirect activation of plasminogen. Tetranectin is found in the extracellular matrix (ECM) of certain carcinomas, but is not present in the ECM of normal tissues. Extracellular proteolysis is an important factor in the ability of malignant cells to penetrate normal tissues and metastasize. Decreased plasma tetranectin or increased tetranectin in stroma of cancers correlates with cancer progression and a grim prognosis. Tetranectin may also influence cancer growth by altering activities of plasminogen or the plasminogen fragment, angiostatin which inhibits tumor cell proliferation.

Product:

Rabbit IgG, 1mg/ml in PBS with 0.02% sodium azide, 50% glycerol, pH7.2

Molecular Weight:

~ 23 kDa

Swiss-Prot:

P05452

Purification&Purity:

The antibody was affinity-purified from rabbit antiserum by affinity-chromatography using epitope-specific immunogen and the purity is > 95% (by SDS-PAGE).

Applications:

WB 1:500 - 1:2000

IF 1:10 - 1:100

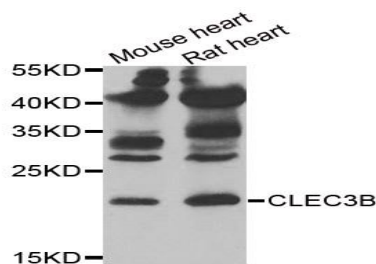
Storage&Stability:

Store at 4 °C short term. Aliquot and store at -20 °C long term. Avoid freeze-thaw cycles.

Specificity:

CLEC3B polyclonal antibody detects endogenous levels of CLEC3B protein.

DATA:



WesternBlot (WB) analysis of CLEC3B polyclonal antibody

Note:

For research use only, not for use in diagnostic procedure.

Bioworld Technology, Inc.

Add: 1660 South Highway 100, Suite 500 St. Louis Park, MN 55416, USA.

Email: info@bioworld.com

Tel: 6123263284

Fax: 6122933841

Bioworld technology, co. Ltd.

Add: No 9, weidi road Qixia District Nanjing, 210046, P. R. China.

Email: info@biogot.com

Tel: 0086-025-68037686

Fax: 0086-025-68035151