

## BCL2L14 polyclonal antibody

Catalog: BS8249

Host: Rabbit

Reactivity: Human, Mouse, Rat

### BackGround:

Apoptosis is defined as a set of cascades which, when initiated, program the cell to undergo lethal changes such as membrane blebbing, mitochondrial breakdown and DNA fragmentation. Bcl-2 is one of many key regulators of apoptosis that are essential for proper development, tissue homeostasis and protection against foreign pathogens. Bcl-G, also known as BCL2L14 (BCL2-like 14) or BCLG, is a 327 amino acid cytoplasmic protein that belongs to the Bcl-2 family of apoptosis-regulating proteins. Bcl-G is expressed as three alternatively spliced transcripts designated short, medium and long. The short isoform is testis-specific and localizes to cytosolic organelles, while the long isoform is widely expressed and is distributed throughout the cytosol. Overexpression of Bcl-G induces apoptosis in cells, suggesting a possible role for Bcl-G in tumor suppression.

### Product:

Rabbit IgG, 1mg/ml in PBS with 0.02% sodium azide, 50% glycerol, pH7.2

### Molecular Weight:

~ 37 kDa

### Swiss-Prot:

Q9BZR8

### Purification&Purity:

The antibody was affinity-purified from rabbit antiserum by affinity-chromatography using epitope-specific immunogen and the purity is > 95% (by SDS-PAGE).

### Applications:

WB: 1:500~1:2000

IF: 1:50~1:200

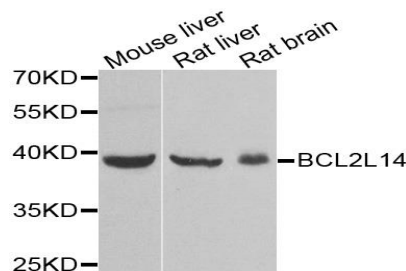
### Storage&Stability:

Store at 4 °C short term. Aliquot and store at -20 °C long term. Avoid freeze-thaw cycles.

### Specificity:

BCL2L14 polyclonal antibody detects endogenous levels of BCL2L14 protein.

### DATA:



WesternBlot (WB) analysis of BCL2L14 polyclonal antibody

### Note:

For research use only, not for use in diagnostic procedure.

### Bioworld Technology, Inc.

Add: 1660 South Highway 100, Suite 500 St. Louis Park, MN 55416, USA.

Email: [info@bioworld.com](mailto:info@bioworld.com)

Tel: 6123263284

Fax: 6122933841

### Bioworld technology, co. Ltd.

Add: No 9, weidi road Qixia District Nanjing, 210046, P. R. China.

Email: [info@biogot.com](mailto:info@biogot.com)

Tel: 0086-025-68037686

Fax: 0086-025-68035151