

## CSNK1A1L polyclonal antibody

Catalog: BS8259

Host: Rabbit

Reactivity: Human

### BackGround:

Casein kinase I (also designated CKI) and casein kinase II (CKII) compose a family of serine/threonine protein kinases which are present in all eukaryotes examined to date. Casein kinase I family members, which include casein kinase I $\alpha$ , I $\gamma$ , I $\delta$  and I $\epsilon$ , have been implicated in the control of cytoplasmic and nuclear processes, including DNA replication and repair, membrane trafficking, circadian rhythm, cell cycle progression, chromosome segregation, apoptosis and cellular differentiation. Casein kinase I isoform  $\alpha$ -like (CSNK1A1L) is a 337 amino acid protein that shares a high degree of sequence similarity with the  $\alpha$  isoform of casein kinase I. CSNK1A1L resides in the cytoplasm and participates in the Wnt signaling pathway. By utilizing ATP within its protein kinase domain, CSNK1A1L phosphorylates a large number of proteins.

### Product:

Rabbit IgG, 1mg/ml in PBS with 0.02% sodium azide, 50% glycerol, pH7.2

### Molecular Weight:

~ 39 kDa

### Swiss-Prot:

Q8N752

### Purification&Purity:

The antibody was affinity-purified from rabbit antiserum

by affinity-chromatography using epitope-specific immunogen and the purity is > 95% (by SDS-PAGE).

### Applications:

WB: 1:500~1:2000

IF: 1:50~1:200

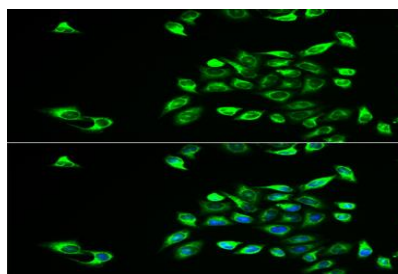
### Storage&Stability:

Store at 4 °C short term. Aliquot and store at -20 °C long term. Avoid freeze-thaw cycles.

### Specificity:

CSNK1A1L polyclonal antibody detects endogenous levels of CSNK1A1L protein.

### DATA:



Immunofluorescence analysis of HeLa cell using CSNK1A1L antibody.

Blue: DAPI for nuclear staining.

### Note:

For research use only, not for use in diagnostic procedure.

### Bioworld Technology, Inc.

Add: 1660 South Highway 100, Suite 500 St. Louis Park, MN 55416, USA.

Email: [info@bioworld.com](mailto:info@bioworld.com)

Tel: 6123263284

Fax: 6122933841

### Bioworld technology, co. Ltd.

Add: No 9, weidi road Qixia District Nanjing, 210046, P. R. China.

Email: [info@biogot.com](mailto:info@biogot.com)

Tel: 0086-025-68037686

Fax: 0086-025-68035151