

## EAF2 polyclonal antibody

Catalog: BS8722

Host: Rabbit

Reactivity: Human, Mouse, Rat

### Background:

EAF1 and EAF2 can form a complex with ELL that targets the ternary elongation complex of Pol II, stimulating the rate of elongation. In addition, EAF1 and EAF2 are important for the stability of the NuA4 histone acetyltransferase complex, which transcriptionally activates certain genes by acetylation of Histones H4 and H2A. Both EAF1 and EAF2 are ubiquitously expressed members of the EAF family that colocalize with ELL to the Cajal bodies and nuclear speckles. EAF1 contains a C-terminal region rich in aspartic acid, glutamic acid and serine residues. EAF2 is an androgen-response gene and can act as a potent apoptosis inducer.

### Product:

Rabbit IgG, 1mg/ml in PBS with 0.02% sodium azide, 50% glycerol, pH7.2

### Molecular Weight:

~ 35 kDa

### Swiss-Prot:

Q96CJ1

### Purification&Purity:

The antibody was affinity-purified from rabbit antiserum by affinity-chromatography using epitope-specific immunogen and the purity is > 95% (by SDS-PAGE).

### Applications:

WB: 1:500~1:2000

IF: 1:50~1:200

### Storage&Stability:

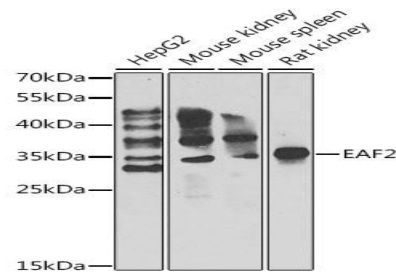
Store at 4 °C short term. Aliquot and store at -20 °C long

term. Avoid freeze-thaw cycles.

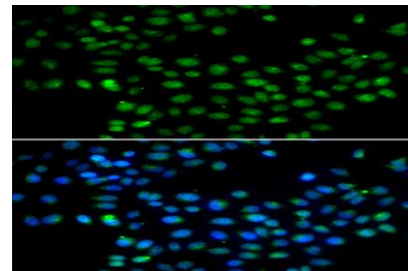
### Specificity:

EAF2 polyclonal antibody detects endogenous levels of EAF2 protein.

### DATA:



Western blot analysis of extracts of various cell lines, using EAF2 antibody.



Immunofluorescence analysis of A549 cell using EAF2 antibody. Blue: DAPI for nuclear staining.

### Note:

For research use only, not for use in diagnostic procedure.

### Bioworld Technology, Inc.

Add: 1660 South Highway 100, Suite 500 St. Louis Park, MN 55416, USA.

Email: [info@bioworld.com](mailto:info@bioworld.com)

Tel: 6123263284

Fax: 6122933841

### Bioworld technology, co. Ltd.

Add: No 9, weidi road Qixia District Nanjing, 210046, P. R. China.

Email: [info@biogot.com](mailto:info@biogot.com)

Tel: 0086-025-68037686

Fax: 0086-025-68035151