

CRISP2 polyclonal antibody

Catalog: BS8755

Host: Rabbit

Reactivity: Human, Mouse, Rat

BackGround:

CRISP-2, also known as testis-specific protein TPX1 or cancer/testis antigen 36 (CT36), is a 243 amino acid secreted protein. Expressed in the testis and epididymis, CRISP-2 is thought to be involved in calcium fluxes during sperm capacitation by regulating the activity of certain ion channels. CRISP-3 is expressed in pancreas and prostate tissues and, along with CRISP-1, is expressed in saliva. The gene that encodes CRISP-3 is an early response gene that may participate in the pathophysiology of the auto-immune lesions of Sjogren's syndrome.

Product:

Rabbit IgG, 1mg/ml in PBS with 0.02% sodium azide, 50% glycerol, pH7.2

Molecular Weight:

~ 27kDa

Swiss-Prot:

P16562

Purification&Purity:

The antibody was affinity-purified from rabbit antiserum by affinity-chromatography using epitope-specific immunogen and the purity is > 95% (by SDS-PAGE).

Applications:

WB 1:500 - 1:2000

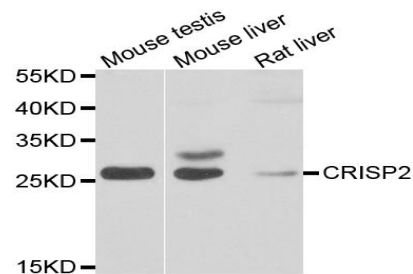
Storage&Stability:

Store at 4 °C short term. Aliquot and store at -20 °C long term. Avoid freeze-thaw cycles.

Specificity:

CRISP2 polyclonal antibody detects endogenous levels of CRISP2 protein.

DATA:



Western blot analysis of extracts of various cell lines, using CRISP2 antibody.

Note:

For research use only, not for use in diagnostic procedure.

Bioworld Technology, Inc.

Add: 1660 South Highway 100, Suite 500 St. Louis Park, MN 55416, USA.

Email: info@bioworld.com

Tel: 6123263284

Fax: 6122933841

Bioworld technology, co. Ltd.

Add: No 9, weidi road Qixia District Nanjing, 210046, P. R. China.

Email: info@biogot.com

Tel: 0086-025-68037686

Fax: 0086-025-68035151