

## C/EBP- $\gamma$ polyclonal antibody

Catalog: BS8806

Host: Rabbit

Reactivity: Human, Mouse, Rat

### Background:

The transcription factor C/EBP  $\alpha$  (CCAAT-enhancer binding protein) is a heatstable, sequence-specific DNA-binding protein first purified from rat liver nuclei that binds avidly to several different cis-regulatory DNA sequences commonly associated with viral and cellular genes transcribed by RNA polymerase II. C/EBP  $\alpha$  regulates gene expression in a variety of tissues including liver, adipose, lung and intestine. C/EBP  $\alpha$  uses a bipartite structural motif to bind DNA. Two protein chains dimerize through a set of amphipathic alpha helices termed the leucine zipper. Highly basic polypeptide regions emerge from the zipper to form a linked set of DNA contact surfaces. C/EBP  $\alpha$  appears to function exclusively in terminally differentiated, growth-arrested cells. Additional family members include C/EBP  $\beta$ , C/EBP  $\gamma$ , C/EBP  $\delta$  and C/EBP  $\epsilon$ , all of which exhibit similar DNA-binding specificities and affinities to C/EBP  $\alpha$ . Furthermore, C/EBP  $\beta$  and C/EBP  $\delta$  readily form heterodimers both with each other as well as with C/EBP  $\alpha$ .

### Product:

Rabbit IgG, 1mg/ml in PBS with 0.02% sodium azide, 50% glycerol, pH7.2

### Molecular Weight:

~ 16kDa

### Swiss-Prot:

P53567

### Purification&Purity:

The antibody was affinity-purified from rabbit antiserum

by affinity-chromatography using epitope-specific immunogen and the purity is > 95% (by SDS-PAGE).

### Applications:

WB: 1:500~1:2000

IHC: 1:50~1:200

IF: 1:50~1:200

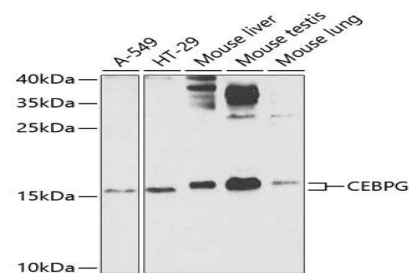
### Storage&Stability:

Store at 4 °C short term. Aliquot and store at -20 °C long term. Avoid freeze-thaw cycles.

### Specificity:

C/EBP- $\gamma$  polyclonal antibody detects endogenous levels of C/EBP- $\gamma$  protein.

### DATA:



Western blot analysis of extracts of various cell lines, using C/EBP- $\gamma$  antibody.

### Note:

For research use only, not for use in diagnostic procedure.

### Bioworld Technology, Inc.

Add: 1660 South Highway 100, Suite 500 St. Louis Park, MN 55416, USA.

Email: [info@bioworld.com](mailto:info@bioworld.com)

Tel: 6123263284

Fax: 6122933841

### Bioworld technology, co. Ltd.

Add: No 9, weidi road Qixia District Nanjing, 210046, P. R. China.

Email: [info@biogot.com](mailto:info@biogot.com)

Tel: 0086-025-68037686

Fax: 0086-025-68035151