

CAMK1G polyclonal antibody

Catalog: BS8870

Host: Rabbit

Reactivity: Human, Mouse, Rat

Background:

The Ca²⁺/calmodulin-dependent protein kinases (CaMKs) comprise a structurally related subfamily of serine/threonine kinases. CaMKI γ (calcium/calmodulin-dependent protein kinase I γ), also known as VWS1 or CLICKIII, is a 476 amino acid protein that localizes to both the cytoplasm and to the membrane of the Golgi apparatus and contains one protein kinase domain. Expressed predominately in brain and present at lower levels in spleen, liver, kidney and skeletal muscle, CaMKI γ functions as a Ca²⁺/calmodulin-dependent protein kinase that uses ATP to catalyze the phosphorylation of target proteins, such as the transcription factor CREB-1. CaMKI γ exists as multiple alternatively spliced isoforms and is encoded by a gene which maps to human chromosome 1.

Product:

Rabbit IgG, 1mg/ml in PBS with 0.02% sodium azide, 50% glycerol, pH7.2

Molecular Weight:

~ 53kDa

Swiss-Prot:

Q96NX5

Purification&Purity:

The antibody was affinity-purified from rabbit antiserum by affinity-chromatography using epitope-specific im-

munogen and the purity is > 95% (by SDS-PAGE).

Applications:

WB: 1:500~1:2000

IHC: 1:50~1:200

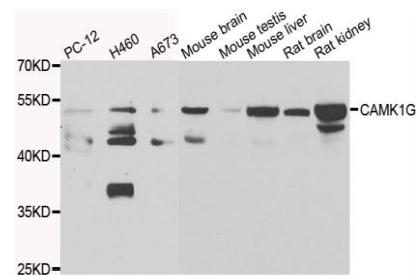
Storage&Stability:

Store at 4 °C short term. Aliquot and store at -20 °C long term. Avoid freeze-thaw cycles.

Specificity:

CAMK1G polyclonal antibody detects endogenous levels of CAMK1G protein.

DATA:



Western blot analysis of extracts of various cell lines, using CAMK1G antibody.

Note:

For research use only, not for use in diagnostic procedure.

Bioworld Technology, Inc.

Add: 1660 South Highway 100, Suite 500 St. Louis Park, MN 55416, USA.

Email: info@bioworld.com

Tel: 6123263284

Fax: 6122933841

Bioworld technology, co. Ltd.

Add: No 9, weidi road Qixia District Nanjing, 210046, P. R. China.

Email: info@biogot.com

Tel: 0086-025-68037686

Fax: 0086-025-68035151