

## Cytochrome P450 Reductase polyclonal antibody

Catalog: BS90372

Host: Rabbit

Reactivity: Human, Mouse, Rat

### Background:

P450 enzymes constitute a family of monooxygenase enzymes that are involved in the metabolism of a wide array of endogenous and xenobiotic compounds. Several P450 enzymes have been classified by sequence similarities as members of the CYP1A and CYP2A subfamilies. CYPOR, also known as cytochrome P450 reductase and NADPH cytochrome P450 reductase, is a microsomal enzyme responsible for the transfer of electrons from NADPH to cytochrome P450 enzymes during the P450 catalytic cycle. CYPOR is localized to the endoplasmic reticulum, where it is also able to transfer electrons to heme oxygenase and cytochrome b5. CYPOR is structurally related to two separate flavoprotein families, ferredoxin nucleotide reductase (FNR) and flavodoxin. Electron transfer of CYPOR requires the binding of two flavin cofactors, FAD and FMN, to the FNR and flavodoxin domains, respectively.

### Product:

Rabbit IgG, 1mg/ml in PBS with 0.02% sodium azide, 50% glycerol, pH7.2

### Molecular Weight:

77 kDa

### Swiss-Prot:

P16435(Human) P37040(Mouse) P00388(Rat)

### Purification&Purity:

ProA affinity purified

### Applications:

WB:1:500-1:1,000

ICC:1:50-1:200

IHC:1:50-1:200

FC:1:50-1:100

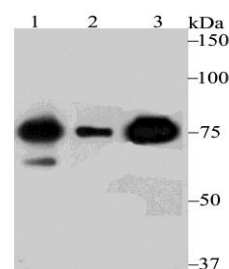
### Storage&Stability:

Store at +4 °C after thawing. Aliquot store at -20 °C or -80 °C. Avoid repeated freeze / thaw cycles.

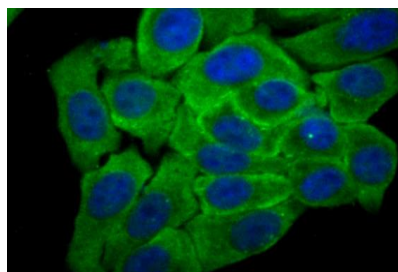
### Specificity:

Cytochrome P450 Reductase polyclonal antibody detects endogenous levels of Cytochrome P450 Reductase protein.

### DATA:



Western blot analysis of Cytochrome P450 Reductase on SK-Br-3 (1), A549 (2) and mouse lung (3) lysate using anti-Cytochrome P450 Reductase antibody at 1/500 dilution.



ICC staining Cytochrome P450 Reductase in HepG2 cells (green). The nuclear counter stain is DAPI (blue). Cells were fixed in paraformaldehyde, permeabilised with 0.25% Triton X100/PBS.

### Note:

For research use only, not for use in diagnostic procedure.

### Bioworld Technology, Inc.

Add: 1660 South Highway 100, Suite 500 St. Louis Park, MN 55416, USA.

Email: [info@bioworld.com](mailto:info@bioworld.com)

Tel: 6123263284

Fax: 6122933841

### Bioworld technology, co. Ltd.

Add: No 9, weidi road Qixia District Nanjing, 210046, P. R. China.

Email: [info@biogot.com](mailto:info@biogot.com)

Tel: 0086-025-68037686

Fax: 0086-025-68035151