

KIR2.1 (C122) polyclonal antibody

Catalog: BS9150

Host: Rabbit

Reactivity: Human, Mouse, Rat

BackGround:

The KIR2 subunit family includes 2.1, 2.2, 2.3 and 2.4. Unlike G protein-coupled KIR3 subunits, KIR2.1 requires both phosphorylation by PKA and ATP hydrolysis for functional activity. KIR2.1 is expressed in the superior and inferior collicula and the pontine region of the brain, where it moderates synaptic transmission, like many other potassium channels. In the placenta, KIR2.1 is expressed throughout gestation in cytotrophoblast cells. In the kidney, KIR2.1 colocalizes with KIR5.1 in the proximal tubule. KIR2.1, 2.2 and 2.3 associate with the membrane-associated guanylate kinase synapse-associated protein 97 in the cerebellum and heart. Phosphorylation of KIR2.2 by protein kinase A inhibits the association with SAP97.

Product:

Rabbit IgG, 1mg/ml in PBS with 0.02% sodium azide, 50% glycerol, pH7.2

Molecular Weight:

~ 48 kDa

Swiss-Prot:

P63252

Purification&Purity:

The antibody was affinity-purified from rabbit antiserum by affinity-chromatography using epitope-specific immunogen and the purity is > 95% (by SDS-PAGE).

Applications:

WB: 1:500~1:1000

IHC: 1:50~1:200

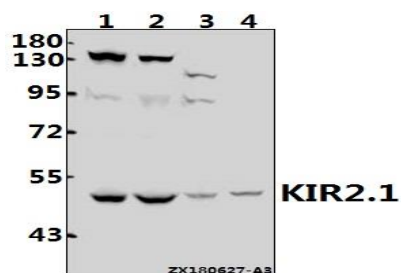
Storage&Stability:

Store at 4 °C short term. Aliquot and store at -20 °C long term. Avoid freeze-thaw cycles.

Specificity:

KIR2.1 (C122) polyclonal antibody detects endogenous levels of KIR2.1 protein.

DATA:



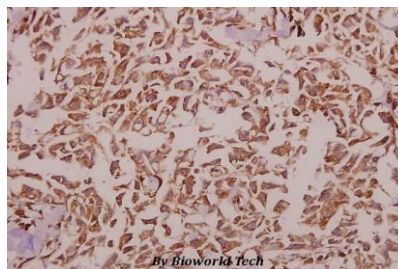
Western blot (WB) analysis of KIR2.1 (C122) pAb at 1:1000 dilution

Lane1:HEK293T whole cell lysate(30ug)

Lane2:H1792 whole cell lysate(40ug)

Lane3:The Brain tissue lysate of Mouse(40ug)

Lane4:The Brain tissue lysate of Rat(40ug)



Immunohistochemistry (IHC) analyzes of KIR2.1 (C122) pAb in paraffin-embedded human breast carcinoma tissue at 1:50.

Note:

For research use only, not for use in diagnostic procedure.

Bioworld Technology, Inc.

Add: 1660 South Highway 100, Suite 500 St. Louis Park, MN 55416, USA.

Email: info@bioworld.com

Tel: 6123263284

Fax: 6122933841

Bioworld technology, co. Ltd.

Add: No 9, weidi road Qixia District Nanjing, 210046, P. R. China.

Email: info@biogot.com

Tel: 0086-025-68037686

Fax: 0086-025-68035151