

Lad (I249) polyclonal antibody

Catalog: BS9161

Host: Rabbit

Reactivity: Human

BackGround:

Lad (TSAD, TSAd, F2771, SH2D2A, SH2 domain protein 2A) is a 52 kDa cytoplasmic adapter protein that undergoes tyrosine-phosphorylation and influences T cell activation. Lad (SH2D2A) mRNA is present in peripheral blood leukocytes, thymus and spleen, and accumulates in the cytoplasm during T cell activation. The Lad gene maps to chromosome 1q21 in a region where alterations are characteristic to lymphomas.

Product:

Rabbit IgG, 1mg/ml in PBS with 0.02% sodium azide, 50% glycerol, pH7.2

Molecular Weight:

~ 52 kDa

Swiss-Prot:

Q9NP31

Purification&Purity:

The antibody was affinity-purified from rabbit antiserum by affinity-chromatography using epitope-specific immunogen and the purity is > 95% (by SDS-PAGE).

Applications:

WB: 1:500~1:1000

IHC: 1:50~1:200

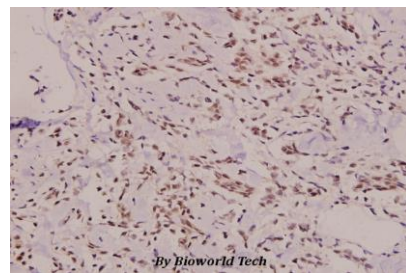
Storage&Stability:

Store at 4 °C short term. Aliquot and store at -20 °C long term. Avoid freeze-thaw cycles.

Specificity:

Lad (I249) polyclonal antibody detects endogenous levels of Lad protein.

DATA:



Immunohistochemistry (IHC) analyzes of Lad (I249) pAb in paraffin-embedded human breast carcinoma tissue at 1:100.

Note:

For research use only, not for use in diagnostic procedure.

Bioworld Technology, Inc.

Add: 1660 South Highway 100, Suite 500 St. Louis Park, MN 55416, USA.

Email: info@bioworld.com

Tel: 6123263284

Fax: 6122933841

Bioworld technology, co. Ltd.

Add: No 9, weidi road Qixia District Nanjing, 210046, P. R. China.

Email: info@biogol.com

Tel: 0086-025-68037686

Fax: 0086-025-68035151