

Bcl-7a (N62) polyclonal antibody

Catalog: BS9274

Host: Rabbit

Reactivity: Human, Mouse, Rat

BackGround:

Bcl-7a (B-cell CLL/lymphoma 7 protein family member A) is a 210 amino acid protein that belongs to the Bcl-7 family. Chromosomal aberrations involving a disruption of the amino-terminus of Bcl-7a may be a cause of B-cell nonHodgkin lymphoma (BNHL). Bcl-7b and Bcl-7c proteins share 90% identity with the N-terminal 51 amino acids of Bcl-7a, suggesting that the three genes are members of an evolutionarily conserved gene family. Bcl-7 gene family may be involved in early development. The Bcl-7a protein interacts with a novel human Polycomb ring finger gene and exists as two alternatively spliced isoforms. Bcl-7a may play a role in GC reaction and/or B-cell lymphomagenesis. The Bcl-7a gene maps to human chromosome 12q24.31. Chromosome 12 encodes over 1,100 genes and comprises approximately 4.5% of the human genome.

Product:

Rabbit IgG, 1mg/ml in PBS with 0.02% sodium azide, 50% glycerol, pH7.2

Molecular Weight:

~ 26 kDa

Swiss-Prot:

Q4VC05

Purification&Purity:

The antibody was affinity-purified from rabbit antiserum by affinity-chromatography using epitope-specific immunogen and the purity is > 95% (by SDS-PAGE).

Applications:

WB: 1:500~1:1000

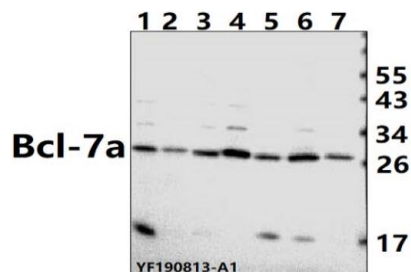
Storage&Stability:

Store at 4 °C short term. Aliquot and store at -20 °C long term. Avoid freeze-thaw cycles.

Specificity:

Bcl-7a (N62) polyclonal antibody detects endogenous levels of Bcl-7a protein.

DATA:



Western blot (WB) analysis of BCL7A pAb at 1:500 dilution

Lane1: The Fallopian tube tissue lysate of Rat(40ug)

Lane2: The Embryo tissue lysate of Mouse(40ug)

Lane3: PC12 whole cell lysate(40ug)

Lane4: CT-26 whole cell lysate (40ug)

Lane5: PC3 whole cell lysate(40ug)

Lane6: A2780 whole cell lysate(40ug)

Lane7: LOVO whole cell lysate(40ug)

Note:

For research use only, not for use in diagnostic procedure.

Bioworld Technology, Inc.

Add: 1660 South Highway 100, Suite 500 St. Louis Park, MN 55416, USA.

Email: info@bioworld.com

Tel: 6123263284

Fax: 6122933841

Bioworld technology, co. Ltd.

Add: No 9, weidi road Qixia District Nanjing, 210046, P. R. China.

Email: info@biogot.com

Tel: 0086-025-68037686

Fax: 0086-025-68035151