

Cleaved-Endostatin (H1572) polyclonal antibody

Catalog: BS9363

Host: Rabbit

Reactivity: Human

BackGround:

Collagen type XV (COL15 gene product) and XVIII (COL18 gene product) form the new subgroup MULTIPLEXIN, within the diverse family of collagens, which contains 19 distinct types of collagens found in vertebrates. Both Collagen Type XV and Type XVIII are characterized by extensive interruptions in their collagenous sequences. Members of the MULTIPLEXIN subgroup contain polypeptides with multiple triple-helical domains separated and flanked by nontriple-helical regions. Type XV is predominantly expressed in internal organs such as adrenal gland, kidney and pancreas. Type XVIII encodes 2 different $\alpha 1$ chains, which have different signal peptides and variant N-terminal non-collagenous NC1 domains of 495 and 303 amino acids. The long variant NC1-434 Type XVIII mRNAs are prominently expressed in liver, while the variant NC1- 303 mRNAs are predominantly expressed in heart, kidney, placenta, prostate, ovary, skeletal muscle and small intestine. Endostatin is a fragment of the Cterminal domain NC1 of Collagen Type XV and Type XVIII that inhibits angiogenesis and tumor growth. Unlike endostatin-XVIII, endostatin-XV does not bind zinc or heparin, however both endostatins can inhibit chorioallantoic membrane angiogenesis induced by basic FGF or VEGF. Collagen Type XV and XVIII are also widely present in basement membrane zones, suggesting their roles in basement membrane-stromal interactions and in-volvement with angiogenic and pathological processes.

Product:

Rabbit IgG, 1mg/ml in PBS with 0.02% sodium azide, 50% glycerol, pH7.2

Molecular Weight:

~ 20 kDa

Swiss-Prot:

P39060

Purification&Purity:

The antibody was affinity-purified from rabbit antiserum by affinity-chromatography using epitope-specific immunogen and the purity is > 95% (by SDS-PAGE).

Applications:

WB: 1:500~1:1000

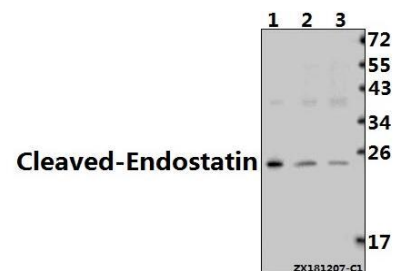
Storage&Stability:

Store at 4 °C short term. Aliquot and store at -20 °C long term. Avoid freeze-thaw cycles.

Specificity:

Cleaved-Endostatin (H1572) polyclonal antibody detects endogenous levels of Cleaved-Endostatin protein.

DATA:



Western blot (WB) analysis of Cleaved-Endostatin (H1572) polyclonal antibody at 1:500 dilution

Lane1:MCF-7 whole cell lysate(40ug)

Lane2:L02 whole cell lysate(40ug)

Lane3:A549 whole cell lysate(40ug)

Note:

For research use only, not for use in diagnostic procedure.

Bioworld Technology, Inc.

Add: 1660 South Highway 100, Suite 500 St. Louis Park, MN 55416, USA.

Email: info@bioworld.com

Tel: 6123263284

Fax: 6122933841

Bioworld technology, co. Ltd.

Add: No 9, weidi road Qixia District Nanjing, 210046, P. R. China.

Email: info@biogot.com

Tel: 0086-025-68037686

Fax: 0086-025-68035151