

## Dynein IC2, axonemal (N105) polyclonal antibody

Catalog: BS9405

Host: Rabbit

Reactivity: Human

### BackGround:

Dyneins are multi-subunit, high molecular weight ATPases that interact with microtubules to generate force by converting the chemical energy of ATP into the mechanical energy of movement. Cytoplasmic or axonemal Dynein heavy, intermediate, light and light-intermediate chains are all components of minus end-directed motors; the complex transports cellular cargos towards the central region of the cell. Axonemal Dynein motors contain one to three nonidentical heavy chains and cause a sliding of microtubules in the axonemes of cilia and flagella in a mechanism necessary for cilia to beat and propel the cell. Cytoplasmic Dynein is an approximately 12 subunit complex of two heavy chains, 2 intermediate chains to anchor Dynein to its cargo, 4 smaller intermediate chains and several light chains. It performs functions necessary for cell survival such as organelle transport and centrosome assembly. The carboxy-terminus of Dynein is important for microtubule-dependent motility and is highly conserved, while the amino-terminal regions are more variable. Several proteins regulate Dynein activity, including dynactin, LIS1 and nudel (NudE-like).

### Product:

Rabbit IgG, 1mg/ml in PBS with 0.02% sodium azide, 50% glycerol, pH7.2

### Molecular Weight:

~ 73kDa

### Swiss-Prot:

Q9GZS0

### Purification&Purity:

The antibody was affinity-purified from rabbit antiserum by affinity-chromatography using epitope-specific immunogen and the purity is > 95% (by SDS-PAGE).

### Applications:

WB: 1:500~1:1000

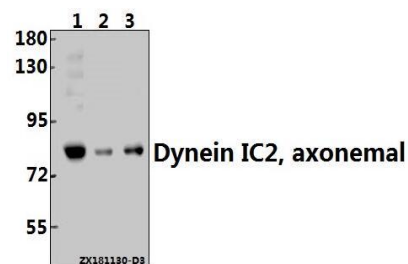
### Storage&Stability:

Store at 4 °C short term. Aliquot and store at -20 °C long term. Avoid freeze-thaw cycles.

### Specificity:

Dynein IC2, axonemal (N105) polyclonal antibody detects endogenous levels of Dynein IC2, axonemal protein.

### DATA:



Western blot (WB) analysis of Dynein IC2, axonemal (N105) polyclonal antibody at 1:500 dilution

Lane1:A2780 whole cell lysate(40ug)

Lane2:Beas-2B whole cell lysate(40ug)

Lane3:SK-OVCAR3 whole cell lysate(40ug)

### Note:

For research use only, not for use in diagnostic procedure.

### Bioworld Technology, Inc.

Add: 1660 South Highway 100, Suite 500 St. Louis Park, MN 55416, USA.

Email: [info@bioworld.com](mailto:info@bioworld.com)

Tel: 6123263284

Fax: 6122933841

### Bioworld technology, co. Ltd.

Add: No 9, weidi road Qixia District Nanjing, 210046, P. R. China.

Email: [info@biogot.com](mailto:info@biogot.com)

Tel: 0086-025-68037686

Fax: 0086-025-68035151