

Rab11-FIP2 (R371) polyclonal antibody

Catalog: BS9506

Host: Rabbit

Reactivity: Human, Mouse, Rat

BackGround:

RAB11FIP2 is an adapter protein that plays a role in the secretory pathway. It is thought to be important for endosome recycling and receptor-mediated endocytosis. In endosome recycling, RAB11-FIP2 regulates vesicle transport from the endosomal recycling compartment (ERC) to the plasma membrane.

Product:

Rabbit IgG, 1mg/ml in PBS with 0.02% sodium azide, 50% glycerol, pH7.2

Molecular Weight:

~ 58 kDa

Swiss-Prot:

Q7L804

Purification&Purity:

The antibody was affinity-purified from rabbit antiserum by affinity-chromatography using epitope-specific immunogen and the purity is > 95% (by SDS-PAGE).

Applications:

WB: 1:500~1:1000

Storage&Stability:

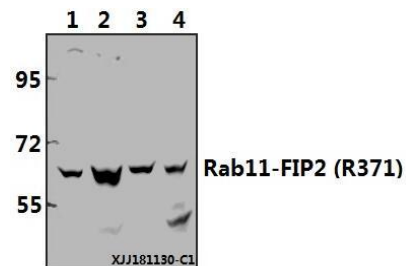
Store at 4 °C short term. Aliquot and store at -20 °C long

term. Avoid freeze-thaw cycles.

Specificity:

Rab11-FIP2 (R371) polyclonal antibody endogenous levels of Rab11-FIP2 protein.

DATA:



Western blot (WB) analysis of Rab11-FIP2 (R371) polyclonal antibody at 1:500 dilution

Lane1:A549 whole cell lysate(40ug)

Lane2:HCT116 whole cell lysate(40ug)

Lane3:3T3-L1 whole cell lysate(40ug)

Lane4:PC12 whole cell lysate(40ug)

Note:

For research use only, not for use in diagnostic procedure.

Bioworld Technology, Inc.

Add: 1660 South Highway 100, Suite 500 St. Louis Park, MN 55416, USA.

Email: info@bioworld.com

Tel: 6123263284

Fax: 6122933841

Bioworld technology, co. Ltd.

Add: No 9, weidi road Qixia District Nanjing, 210046, P. R. China.

Email: info@biogot.com

Tel: 0086-025-68037686

Fax: 0086-025-68035151