

CKMT1 monoclonal antibody

Catalog: MB0024

Host: Mouse

Reactivity: Human, Mouse

BackGround:

CKs provide the energy of phosphate hydrolysis necessary to drive the normal function of many cellular systems including muscle, electrocytes, retina photoreceptor cells, brain cells, kidney, salt glands, myometrium, placenta, pancreas, thymus, thyroid, intestinal epithelial cells, endothelial cells, cartilage and bone cells, macrophages, blood platelets, tumor and cancer cells. Human cytoplasmic CK-Brain (CK-B, BCK) is a 381 amino acid, brain tissue specific isoform of CK. Human cytoplasmic CK-Muscle (CK-M, MCK) is a muscle tissue specific isoform of CK. Human cytoplasmic CK-Mitochondrial (MtCK, Mi-CK) is a 416 amino acid mitochondrial specific isoform of CK. Cytosolic CKs are important in the energetic regulation of Ca²⁺-pumps and in the maintenance of Ca²⁺-homeostasis.

Product:

1mg/ml in PBS with 0.02% sodium azide, 50% glycerol, pH7.2

Molecular Weight:

Predicted band size: 47KDa

Observed band size: 47KDa

Swiss-Prot:

P12532

Purification&Purity:

The antibody was affinity-purified from mouse ascites by

affinity-chromatography using epitope-specific immunogen and the purity is > 95% (by SDS-PAGE).

Applications:

WB: 1:1000

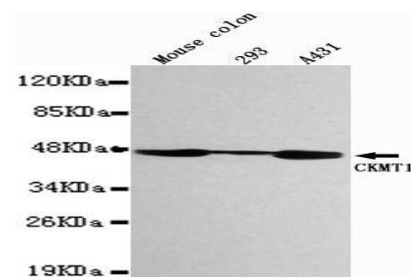
Storage&Stability:

Store at 4 °C short term. Aliquot and store at -20 °C long term. Avoid freeze-thaw cycles.

Specificity:

This antibody detects endogenous levels of CKMT1 and does not cross-react with related proteins

DATA:



Western blot detection of CKMT1 in Mouse Colon, 293&A431 cell lysates using CKMT1 antibody (1:1000 diluted).

Note:

For research use only, not for use in diagnostic procedure.

Bioworld Technology, Inc.

Add: 1660 South Highway 100, Suite 500 St. Louis Park, MN 55416, USA.

Email: info@bioworld.com

Tel: 6123263284

Fax: 6122933841

Bioworld technology, co. Ltd.

Add: No 9, weidi road Qixia District Nanjing, 210046, P. R. China.

Email: info@biogot.com

Tel: 0086-025-68037686

Fax: 0086-025-68035151