

PDE2A mouse monoclonal antibody

Catalog: MB4005

Host: Mouse

Reactivity: Human, Mouse, Rat

BackGround:

cGMP-activated cyclic nucleotide phosphodiesterase with a dual-specificity for the second messengers cAMP and cGMP, which are key regulators of many important physiological processes.

Has a higher efficiency with cGMP compared to cAMP.

Plays a role in cell growth and migration.

Product:

1mg/ml in PBS with 0.02% sodium azide, 50% glycerol, pH7.2

Molecular Weight:

~ 105 kDa

Swiss-Prot:

O00408

Purification&Purity:

The antibody was affinity-purified from mouse ascites fluids or tissue culture supernatant by affinity-chromatography using epitope-specific immunogen and the purity is > 95% (by SDS-PAGE).

Applications:

WB 1:2000, IHC 1:150, IF 1:100, FLOW 1:100

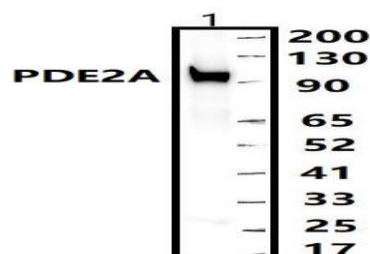
Storage&Stability:

Store at 4 °C short term. Aliquot and store at -20 °C long term. Avoid freeze-thaw cycles.

Isotype:

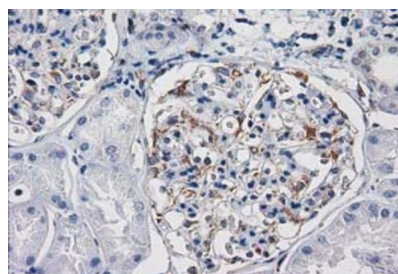
IgG2b

DATA:

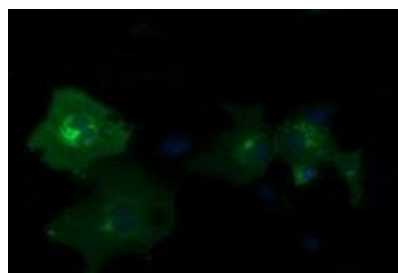


Western blot (WB) analysis of PDE2A mouse monoclonal antibody at 1:500 dilution.

Lane1: The Brain tissue lysate of Mouse(30ug)



Immunohistochemical staining of paraffin-embedded Human Kidney tissue within the normal limits using anti-PDE2A mouse monoclonal antibody. (Heat-induced epitope retrieval by 10mM citric buffer, pH6.0, 100 °C for 10min)



Anti-PDE2A mouse monoclonal antibody immunofluorescent staining of COS7 cells transiently transfected by pCMV6-ENTRY PDE2A (RC207219).

Note:

For research use only, not for use in diagnostic procedure.

Bioworld Technology, Inc.

Add: 1660 South Highway 100, Suite 500 St. Louis Park, MN 55416, USA.

Email: info@bioworld.com

Tel: 6123263284

Fax: 6122933841

Bioworld technology, co. Ltd.

Add: No 9, weidi road Qixia District Nanjing, 210046, P. R. China.

Email: info@biogot.com

Tel: 0086-025-68037686

Fax: 0086-025-68035151