

PIK3C2A mouse monoclonal antibody

Catalog: MB4011

Host: Mouse

Reactivity: Human, Mouse, Rat

BackGround:

Class II phosphatidylinositol 3-kinases (PI3K) contain a C-terminal C2 domain that is unique to the class II isoforms of the PI3K family. This C2 domain mediates protein and phospholipid binding activities. PI3K Class II α generates phosphatidylinositol 3-phosphate (PIP3) and phosphatidylinositol 3,4-bisphosphate (PI(3, 4)P2) from phosphatidylinositol and phosphatidylinositol 4-phosphate. PI3K Class II α is located in various intracellular locations such as the trans-Golgi network, endocytic compartments, clathrin-coated vesicles, and nuclear speckles. Research studies have indicated that PI3K Class II α regulates the assembly and distribution of clathrin, resulting in the modulation of clathrin-dependent trafficking and sorting within the trans Golgi network. PI3K Class II α also mediates translocation of the glucose transporter GLUT4 to the plasma membrane in response to insulin. PI3K Class II α has also been shown to regulate neurosecretory granule exocytosis and vascular smooth muscle contraction. Unlike other PI3K family members, PI3K Class II α is less sensitive to the PI3K inhibitors wortmannin and LY294002.

Product:

1mg/ml in PBS with 0.02% sodium azide, 50% glycerol, pH7.2

Molecular Weight:

~ 190 kDa

Swiss-Prot:

O00443

Purification&Purity:

The antibody was affinity-purified from mouse ascites fluids or tissue culture supernatant by affinity-chromatography using epitope-specific immunogen and the purity is > 95% (by SDS-PAGE).

Applications:

WB 1:2000, IHC 1:150

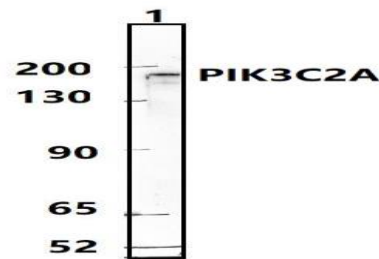
Storage&Stability:

Store at 4 °C short term. Aliquot and store at -20 °C long term. Avoid freeze-thaw cycles.

Isotype:

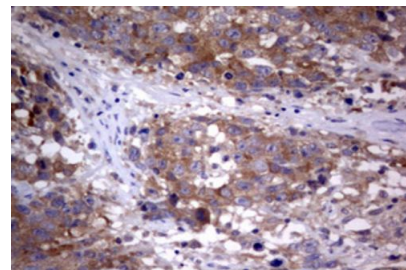
IgG1

DATA:



Western blot (WB) analysis of PIK3C2A mouse monoclonal antibody at 1:500 dilution.

Lane1:SW620 whole cell lysate(30ug)



Immunohistochemical staining of paraffin-embedded Adenocarcinoma of Human ovary tissue using anti-PIK3C2A mouse monoclonal antibody. (Heat-induced epitope retrieval by 10mM citric buffer, pH6.0, 120 °C for 3min)

Note:

For research use only, not for use in diagnostic procedure.

Bioworld Technology, Inc.

Add: 1660 South Highway 100, Suite 500 St. Louis Park, MN 55416, USA.

Email: info@bioworld.com

Tel: 6123263284

Fax: 6122933841

Bioworld technology, co. Ltd.

Add: No 9, weidi road Qixia District Nanjing, 210046, P. R. China.

Email: info@biogot.com

Tel: 0086-025-68037686

Fax: 0086-025-68035151



PRODUCT DATA SHEET

Bioworld Technology, Inc.

Bioworld Technology, Inc.

Add: 1660 South Highway 100, Suite 500 St. Louis Park,
MN 55416, USA.

Email: info@bioworld.com

Tel: 6123263284

Fax: 6122933841

Bioworld technology, co. Ltd.

Add: No 9, weidi road Qixia District Nanjing, 210046,
P. R. China.

Email: info@biogot.com

Tel: 0086-025-68037686

Fax: 0086-025-68035151