

## GAPDHS mouse monoclonal antibody

Catalog: MB4021

Host: Mouse

Reactivity: Human

### BackGround:

May play an important role in regulating the switch between different pathways for energy production during spermiogenesis and in the spermatozoon. Required for sperm motility and male fertility (By similarity).

### Product:

1mg/ml in PBS with 0.02% sodium azide, 50% glycerol, pH7.2

### Molecular Weight:

~ 46 kDa

### Swiss-Prot:

O14556

### Purification&Purity:

The antibody was affinity-purified from mouse ascites fluids or tissue culture supernatant by affinity-chromatography using epitope-specific immunogen and the purity is > 95% (by SDS-PAGE).

### Applications:

WB 1:500, IHC 1:150

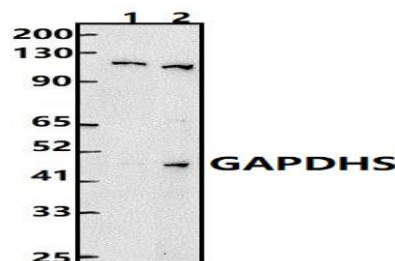
### Storage&Stability:

Store at 4 °C short term. Aliquot and store at -20 °C long term. Avoid freeze-thaw cycles.

### Isotype:

IgG2a

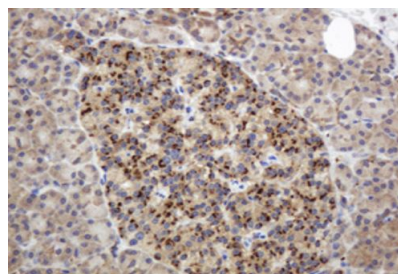
### DATA:



Western blot (WB) analysis of GAPDHS mouse monoclonal antibody at 1:500 dilution

Lane1:MCF-7 whole cell lysate(30ug)

Lane2:A549 whole cell lysate(30ug)



Immunohistochemical staining of paraffin-embedded Human pancreas tissue within the normal limits using anti-GAPDHS mouse monoclonal antibody. (Heat-induced epitope retrieval by 10mM citric buffer, pH6.0, 120 °C for 3min)

### Note:

For research use only, not for use in diagnostic procedure.

### Bioworld Technology, Inc.

Add: 1660 South Highway 100, Suite 500 St. Louis Park, MN 55416, USA.

Email: [info@bioworld.com](mailto:info@bioworld.com)

Tel: 6123263284

Fax: 6122933841

### Bioworld technology, co. Ltd.

Add: No 9, weidi road Qixia District Nanjing, 210046, P. R. China.

Email: [info@biogot.com](mailto:info@biogot.com)

Tel: 0086-025-68037686

Fax: 0086-025-68035151