

GIPC1 mouse monoclonal antibody

Catalog: MB4024

Host: Mouse

Reactivity: Human, Mouse, Rat

BackGround:

GIPC, for GAIP interacting protein at the C-terminus (also designated SEMCAP-1 or synectin), is a PDZ domain containing protein that interacts with RGS-GAIP, a GTPase-activating protein (GAP) for Gαi subunits. GIPC was also identified as TIP-2, a protein that interacts with the viral oncoprotein TAX, which transactivates viral and cellular promoters through interactions with various transcription factors. PDZ domain-containing proteins are primarily localized to cell-cell junctions in epithelial cells and neurons where they coordinate the assembly of multiprotein complexes. GIPC specifically localizes to clusters of vesicles near the plasma membrane and participates in G protein-coupled signaling pathway involved in regulating clathrin-coated vesicular trafficking. GIPC also associates with membrane bound semaphorin F (M-SemF), which is involved in neuronal axon growth, and it appears to regulate the subcellular distribution of M-SemF in the brain.

Product:

1mg/ml in PBS with 0.02% sodium azide, 50% glycerol, pH7.2

Molecular Weight:

~ 41 kDa

Swiss-Prot:

O14908

Purification&Purity:

The antibody was affinity-purified from mouse ascites fluids or tissue culture supernatant by affinity-chromatography using epitope-specific immunogen and the purity is > 95% (by SDS-PAGE).

Applications:

WB 1:500~2000, IHC 1:500

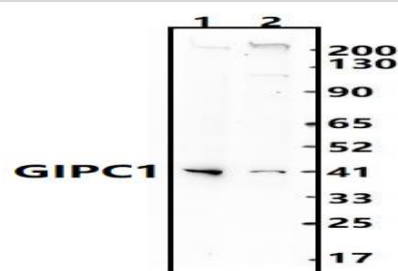
Storage&Stability:

Store at 4 °C short term. Aliquot and store at -20 °C long term. Avoid freeze-thaw cycles.

Isotype:

IgG2a

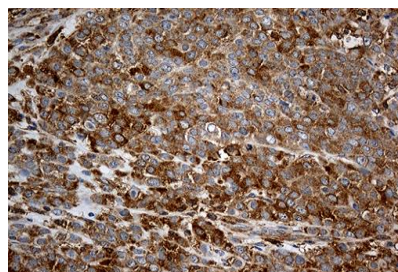
DATA:



Western blot (WB) analysis of GIPC1 mouse monoclonal antibody at 1:500 dilution

Lane1:A549 whole cell lysate(30ug)

Lane2:HEK293T whole cell lysate(30ug)



Immunohistochemical staining of paraffin-embedded Adenocarcinoma of Human breast tissue using anti-GIPC1 mouse monoclonal antibody. (Heat-induced epitope retrieval by 1mM EDTA in 10mM Tris buffer (pH8.5) at 120 °C for 3min) (1:500)

Note:

For research use only, not for use in diagnostic procedure.

Bioworld Technology, Inc.

Add: 1660 South Highway 100, Suite 500 St. Louis Park, MN 55416, USA.

Email: info@bioworld.com

Tel: 6123263284

Fax: 6122933841

Bioworld technology, co. Ltd.

Add: No 9, weidi road Qixia District Nanjing, 210046, P. R. China.

Email: info@biogot.com

Tel: 0086-025-68037686

Fax: 0086-025-68035151