

**SCAP monoclonal antibody**

Catalog: MB67084

Host: Mouse

Reactivity: Human

**BackGround:**

SREBP cleavage activating protein (SCAP) is a membrane-bound protein essential in regulating sterol regulatory element binding protein (SREBP) processing. In cholesterol-starved cells, SREBPs move from the ER to the Golgi apparatus with the help of SCAP, where the precursor SREBPs are cleaved by site-1 (S1P) and site-2 (S2P) proteases. Released SREBP amino-terminal domains enter the nucleus and bind to sterol response elements located in the promoters of a number of genes responsible for the cholesterol synthesis. Research studies show that the SCAP/SREBP pathway is critical for diabetic fatty liver development and carbohydrate-induced hypertriglyceridemia in mice. In addition, the SCAP/SREBP pathway is required to protect cancer cells from lipotoxicity.

**Product:**

Mouse IgG1 kappa. Liquid in PBS, pH 7.3, 30% glycerol, and 0.01% sodium azide.

**Molecular Weight:**

~ 115 kDa

**Swiss-Prot:**

Q12770

**Purification&Purity:**

This antibody is purified through a protein G column.

**Applications:**

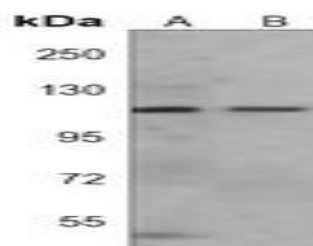
WB (1/1000 - 1/2000)

**Storage&Stability:**

Store at 4 °C short term. Aliquot and store at -20 °C long term. Avoid freeze-thaw cycles.

**Specificity:**

Recognizes endogenous levels of SCAP protein.

**DATA:**

Western blot analysis of SCAP expression in HT29 (A), LNCaP (B) whole cell lysates.

**Note:**

For research use only, not for use in diagnostic procedure.

**Bioworld Technology, Inc.**

Add: 1660 South Highway 100, Suite 500 St. Louis Park, MN 55416, USA.

Email: [info@bioworld.com](mailto:info@bioworld.com)

Tel: 6123263284

Fax: 6122933841

**Bioworld technology, co. Ltd.**

Add: No 9, weidi road Qixia District Nanjing, 210046, P. R. China.

Email: [info@biogot.com](mailto:info@biogot.com)

Tel: 0086-025-68037686

Fax: 0086-025-68035151