

## CD209 polyclonal antibody

Catalog: NCP0190P

Host: Rabbit

Reactivity: Human,Rat,Mouse

### BackGround:

DC-SIGN (CD209, CLEC4L) is a C-type lectin receptor expressed by dendritic cells (DCs). The DC-SIGN transcript can undergo several splicing events to generate at least thirteen different transmembrane and soluble isoforms. DC-SIGN responds to a broad range of pathogens due to its ability to recognize both mannose and fructose carbohydrates, and is well studied for its role in HIV infection. Recognition of the HIV envelope glycoprotein gp120 by DC-SIGN leads to internalization of HIV by DCs and facilitates transmission of the virus to CD4+ T cells. DC-SIGN also mediates adhesion to T cells through interaction with ICAM-3, as well as transmigration across the endothelium by binding to ICAM-2. The DC-SIGN receptor can modulate TLR signaling by activating the kinase Raf-1. The closely related molecule DC-SIGNR (L-SIGN, CLEC4M) is 77% homologous to DC-SIGN and likely arose through a gene duplication event. Like DC-SIGN, DC-SIGNR binds mannose carbohydrates on the surface of pathogens. However, the expression patterns of the two receptors differ, as DC-SIGNR expression is restricted to endothelial cells of the liver, lymph node, and placenta. Murine cells contain a set of related molecules, SIGNR1-SIGNR8. Based on sequence analysis, there is no clear murine ortholog to human DC-SIGN, however SIGNR3 is the most functionally similar due to its ability to recognize both mannose and fructose structures.

### Product:

Rabbit IgG, 1mg/ml in PBS with 0.02% sodium azide, 50% glycerol, pH7.2.

### Molecular Weight:

### Swiss-Prot:

Q9NNX6

### Purification&Purity:

The antibody was affinity-purified from rabbit antiserum by affinity-chromatography using epitope-specific immunogen and the purity is > 95% (by SDS-PAGE).

### Applications:

IF: 1:100~1:500

### Storage&Stability:

Store at 4 °C short term. Aliquot and store at -20 °C long term. Avoid freeze-thaw cycles.

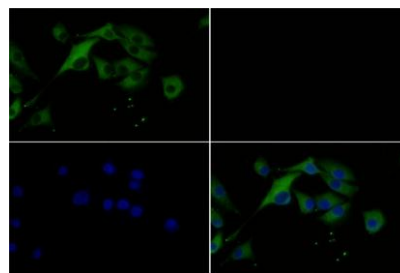
### Specificity:

CD209 polyclonal antibody detects endogenous levels of CD209 protein.

### DATA:

Immunofluores-

cence analysis of MG63 cells using CD209 pAb at dilution of 1:200 (40 x lens).



### Note:

For research use only, not for use in diagnostic procedure.

### Bioworld Technology, Inc.

Add: 1660 South Highway 100, Suite 500 St. Louis Park, MN 55416,USA.

Email: [info@bioworld.com](mailto:info@bioworld.com)

Tel: 6123263284

Fax: 6122933841

### Bioworld technology, co. Ltd.

Add: No 9, weidi road Qixia District Nanjing, 210046, P. R. China.

Email: [info@biogot.com](mailto:info@biogot.com)

Tel: 0086-025-68037686

Fax: 0086-025-68035151