

CD163 polyclonal antibody

Catalog: NCP0287P

Host: Rabbit

Reactivity: Human,Rat,Mouse

BackGround:

CD163 is a transmembrane scavenger receptor expressed on the macrophage surface. It has 9 B-type Scavenger Receptor Cysteine-Rich (SRCR) extracellular domains mediating serum haptoglobin clearing/endocytosis, pathogen binding and signal transduction, and calcium binding. CD163 is used as a surface marker of M2 type macrophages, including M2 type tumor-associated macrophages (TAMs), which facilitate cancer progression by secreting cytokines to promote angiogenesis, immunosuppression, and metastasis. Inflammatory stimulation and stress signals can induce extracellular domain shedding of CD163 to generate soluble CD163 (sCD163). The increased sCD163 level in serum is associated with low-grade inflammation in disease conditions.

Product:

Rabbit IgG, 1mg/ml in PBS with 0.02% sodium azide, 50% glycerol, pH7.2.

Molecular Weight:

Swiss-Prot:

Q86VB7

Purification&Purity:

The antibody was affinity-purified from rabbit antiserum by affinity-chromatography using epitope-specific immunogen and the purity is > 95% (by SDS-PAGE).

Applications:

IF: 1:100~1:500

Storage&Stability:

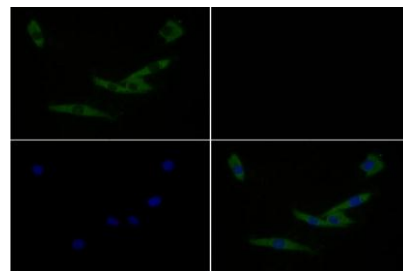
Store at 4 °C short term. Aliquot and store at -20 °C long term. Avoid freeze-thaw cycles.

Specificity:

CD163 polyclonal antibody detects endogenous levels of CD163 protein.

DATA:

Immunofluorescence analysis of MG63 cells using CD163 pAb at dilution of 1:200 (40 x lens).



Note:

For research use only, not for use in diagnostic procedure.

Bioworld Technology, Inc.

Add: 1660 South Highway 100, Suite 500 St. Louis Park, MN 55416, USA.

Email: info@bioworld.com

Tel: 6123263284

Fax: 6122933841

Bioworld technology, co. Ltd.

Add: No 9, weidi road Qixia District Nanjing, 210046, P. R. China.

Email: info@biogot.com

Tel: 0086-025-68037686

Fax: 0086-025-68035151