

PDM1 polyclonal antibody

Catalog: NCP0381P

Host: Rabbit

Reactivity: DROME

BackGround:

DNA-binding regulatory protein implicated in early development. Involved in neuronal cell fate decision. Repressed directly or indirectly by the BX-C homeotic proteins.

Product:

Rabbit IgG, 1mg/ml in PBS with 0.02% sodium azide, 50% glycerol, pH7.2

Molecular Weight:

~ 66 kDa

Swiss-Prot:

P31368

Purification&Purity:

The antibody was affinity-purified from rabbit antiserum by affinity-chromatography using epitope-specific immunogen and the purity is > 95% (by SDS-PAGE).

Applications:

WB: 1:2000 - 1:5000

IF: 1:200 - 1:1000

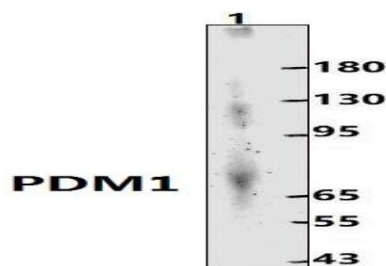
Storage&Stability:

Store at 4 °C short term. Aliquot and store at -20 °C long term. Avoid freeze-thaw cycles.

Specificity:

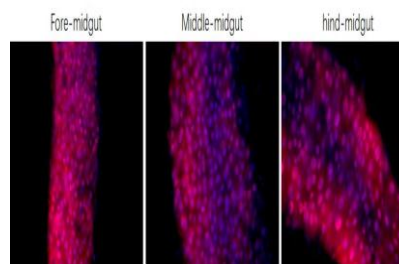
PDM1 polyclonal antibody detects endogenous levels of PDM1 protein.

DATA:



Western blot (WB) analysis of PDM1 polyclonal antibody at 1:5000 dilution

Lane1:The Intestines tissue lysate of Drosophila melanogaster(30ug)



Immunofluorescence analysis of Drosophila melanogaster Intestines using PDM1 antibody at dilution of 1:200.

Note:

For research use only, not for use in diagnostic procedure.

Bioworld Technology, Inc.

Add: 1660 South Highway 100, Suite 500 St. Louis Park, MN 55416, USA.

Email: info@bioworld.com

Tel: 6123263284

Fax: 6122933841

Bioworld technology, co. Ltd.

Add: No 9, weidi road Qixia District Nanjing, 210046, P. R. China.

Email: info@biogot.com

Tel: 0086-025-68037686

Fax: 0086-025-68035151