

MRP14 (G3E10) monoclonal antibody

Catalog: AP0477M

Host: Mouse

Reactivity: Human, Mouse, Rat

BackGround:

The family of EF-hand type Ca²⁺-binding proteins includes Calbindin (previously designated vitamin D-dependent Ca²⁺-binding protein), S-100 α and β , Cal-granulins A (also designated MRP8), B (also designated MRP14) and C (S-100 like proteins) and the parvalbumin family members, including parvalbumin α and parvalbumin β (also designated oncomodulin). Calbindin, S-100 proteins and parvalbumin proteins are each expressed in neural tissues. In addition, S-100 α and β are present in a variety of other tissues and Calbindin is present in intestine and kidney. Parvalbumin α is also found in fast-contracting/relaxing skeletal muscle fibers and parvalbumin β is found in many tumor tissues as well as in the organ of Corti.

Product:

1mg/ml in PBS with 0.02% sodium azide, 50% glycerol, pH7.2

Molecular Weight:

Predicted band size : 13 kDa

Observed band size : 18 kDa

Swiss-Prot:

P06702

Purification&Purity:

The antibody was affinity-purified from mouse antiserum by affinity-chromatography using epitope-specific immunogen and the purity is > 95% (by SDS-PAGE).

Applications:

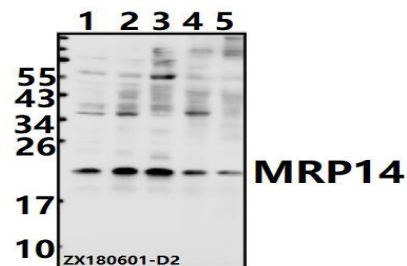
WB: 1:500~1:1000

Storage&Stability:

Store at 4 °C short term. Aliquot and store at -20 °C long term. Avoid freeze-thaw cycles.

Specificity:

MRP14 (G3E10) mAb detects endogenous levels of MRP14 protein or MRP8+MRP14 complex.

DATA:

Western blot (WB) analysis of MRP14 (G3E10) pAb at 1:500 dilution

Lane1:A375 whole cell lysate(40ug)

Lane2:EC9706 whole cell lysate(40ug)

Lane3:Myla2059 whole cell lysate(40ug)

Lane4:AML-12 whole cell lysate(40ug)

Lane5:PC12 whole cell lysate(40ug)

Note:

For research use only, not for use in diagnostic procedure.

Bioworld Technology, Inc.

Add: 1660 South Highway 100, Suite 500 St. Louis Park, MN 55416, USA.

Email: info@bioworld.com

Tel: 6123263284

Fax: 6122933841

Bioworld technology, co. Ltd.

Add: No 9, weidi road Qixia District Nanjing, 210046, P. R. China.

Email: info@biogot.com

Tel: 0086-025-68037686

Fax: 0086-025-68035151