

## Occludin (A23) polyclonal antibody

Catalog: AP0765

Host: Rabbit

Reactivity: Human, Mouse, Rat

### BackGround:

Occludin is an integral membrane protein closely associated with the tight junctions of epithelial and endothelial cells. Occludin is a tetraspan integral membrane protein in epithelial and endothelial tight junction (TJ) structures that can contain two extracellular loops. The protein exists in a variety of phosphorylated forms. Phosphorylation is involved in regulating both the localization and the function of occludin. Expression of occludin is up-regulated by polyunsaturated fatty acids, increasing transendothelial cell resistance and reducing cellular permeability to large molecules. The level of occludin varies greatly depending on tissue; in brain tissue, occludin is highly expressed at cell-cell contact sites.

### Product:

Rabbit IgG, 1mg/ml in PBS with 0.02% sodium azide, 50% glycerol, pH7.2

### Molecular Weight:

~ 59 kDa

### Swiss-Prot:

Q16625

### Purification&Purity:

The antibody was affinity-purified from rabbit antiserum by affinity-chromatography using epitope-specific immunogen and the purity is > 95% (by SDS-PAGE).

### Applications:

WB: 1:500~1:1000

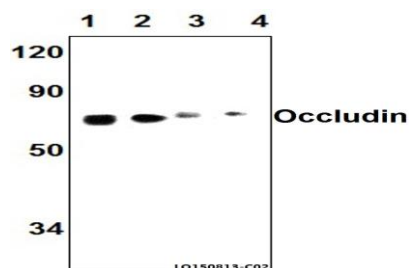
### Storage&Stability:

Store at 4 °C short term. Aliquot and store at -20 °C long term. Avoid freeze-thaw cycles.

### Specificity:

Occludin (A23) polyclonal antibody detects endogenous levels of Occludin protein.

### DATA:



Western blot (WB) analysis of Occludin (A23) polyclonal antibody at 1:1000 dilution

Lane1:Hela whole cell lysate(40ug)

Lane2:PC12 whole cell lysate(40ug)

Lane3:The Kidney tissue lysate of Mouse(30ug)

Lane4:The Kidney tissue lysate of Rat(30ug)

### Note:

For research use only, not for use in diagnostic procedure.

### Bioworld Technology, Inc.

Add: 1660 South Highway 100, Suite 500 St. Louis Park, MN 55416, USA.

Email: [info@bioworld.com](mailto:info@bioworld.com)

Tel: 6123263284

Fax: 6122933841

### Bioworld technology, co. Ltd.

Add: No 9, weidi road Qixia District Nanjing, 210046, P. R. China.

Email: [info@biogot.com](mailto:info@biogot.com)

Tel: 0086-025-68037686

Fax: 0086-025-68035151