

ATG2B polyclonal antibody

Catalog: AP0773

Host: Rabbit

Reactivity: Human, Mouse, Rat

BackGround:

Atg2B (ATG2 autophagy related 2 homolog B) is a 2,078 amino acid protein belonging to the ATG2 family. Encoded by a gene that maps to human chromosome 14q32.2, Atg2B is conserved in chimpanzee, canine, bovine, mouse, chicken, zebrafish, fruit fly, mosquito and *Caenorhabditis elegans*. 16 known human ATG genes exist, of which four (Atg2B, Atg5, Atg9B and Atg12) possess mononucleotide repeats with seven or more nucleotides. Atg2B frameshift mutations may contribute to development of cancer via disruption of autophagy. Atg2B associates with Atg2A, which is also linked to frameshift mutations associated with gastric and colorectal carcinomas with high microsatellite instability, indicating that these two related proteins functionally interact. WIPI-4, which is phylogenetically related to both Atg18p and Atg21p, associates with Atg2B and reciprocally binds Atg2A.

Product:

1 mg/ml in Phosphate buffered saline (PBS) with 0.05% sodium azide, approx. pH 7.3.

Molecular Weight:

~ 233 kDa

Swiss-Prot:

Q96BY7

Purification&Purity:

The antibody was affinity-purified from rabbit antiserum by affinity-chromatography using epitope-specific immunogen and the purity is > 95% (by SDS-PAGE).

Applications:

WB:1:500~1:1000

IHC:1:50~1:200

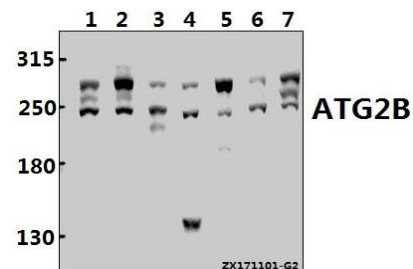
Storage&Stability:

Store at 4 °C short term. Aliquot and store at -20 °C long term. Avoid freeze-thaw cycles.

Specificity:

ATG2B polyclonal antibody detects endogenous levels of ATG2B protein.

DATA:



Western blot (WB) analysis of ATG2B pAb at 1:1000 dilution

Lane1:H1792 whole cell lysate(40ug)

Lane2:A549 whole cell lysate(40ug)

Lane3:The Brain tissue lysate of Mouse(40ug)

Lane4:C6 whole cell lysate(40ug)

Lane5:HCT116 whole cell lysate(40ug)

Lane6:MCF-7 whole cell lysate(40ug)

Lane7:PC3 whole cell lysate(40ug)

Note:

For research use only, not for use in diagnostic procedure.

Bioworld Technology, Inc.

Add: 1660 South Highway 100, Suite 500 St. Louis Park, MN 55416, USA.

Email: info@bioworld.com

Tel: 6123263284

Fax: 6122933841

Bioworld technology, co. Ltd.

Add: No 9, weidi road Qixia District Nanjing, 210046, P. R. China.

Email: info@biogot.com

Tel: 0086-025-68037686

Fax: 0086-025-68035151