

Occludin polyclonal antibody

Catalog: AP6005

Host: Rabbit

Reactivity: Human, Mouse, Rat

BackGround:

Occludin is an integral membrane protein closely associated with the tight junctions of epithelial and endothelial cells. Occludin is a tetraspan integral membrane protein in epithelial and endothelial tight junction (TJ) structures that can contain two extracellular loops. The protein exists in a variety of phosphorylated forms. Phosphorylation is involved in regulating both the localization and the function of occludin. Expression of occludin is up-regulated by polyunsaturated fatty acids, increasing transendothelial cell resistance and reducing cellular permeability to large molecules. The level of occludin varies greatly depending on tissue; in brain tissue, occludin is highly expressed at cell-cell contact sites.

Product:

0.01M TBS(pH7.4) with 1% BSA, 0.03% Proclin300 and 50% Glycerol.

Molecular Weight:

~ 59 kDa

Swiss-Prot:

Q16625

Purification&Purity:

The antibody was affinity-purified from rabbit antiserum by affinity-chromatography using epitope-specific immunogen and the purity is > 95% (by SDS-PAGE).

Applications:

WB 1:500 - 1:2000

IHC 1:100 - 1:500

IF 1:100 - 1:500

ICC 1:100 - 1:500

ELISA 1:5000 - 1:10000

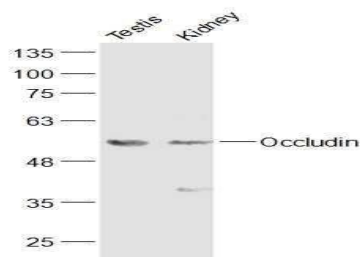
Storage&Stability:

Store at 4 °C short term. Aliquot and store at -20 °C long term. Avoid freeze-thaw cycles.

Specificity:

Occludin polyclonal antibody detects endogenous levels of Occludin protein.

DATA:

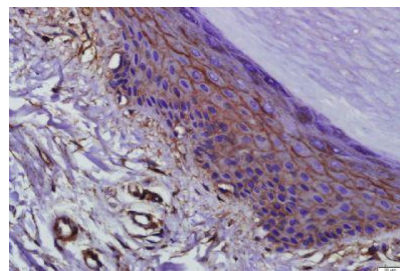


Sample:

Testis (Mouse) Lysate at 40 ug

Kidney (Mouse) Lysate at 40 ug

Primary: Anti-Occludin at 1/300 dilution



Paraformaldehyde-fixed, paraffin embedded (Normal skin); Antigen retrieval by boiling in sodium citrate buffer (pH6.0) for 15min; Block endogenous peroxidase by 3% hydrogen peroxide for 20 minutes; Blocking buffer (normal goat serum) at 37 °C for 30min; Antibody incubation with (Occludin) Polyclonal Antibody, Unconjugated at 1:400 overnight at 4 °C.

Note:

For research use only, not for use in diagnostic procedure.

Bioworld Technology, Inc.

Add: 1660 South Highway 100, Suite 500 St. Louis Park, MN 55416, USA.

Email: info@bioworld.com

Tel: 6123263284

Fax: 6122933841

Bioworld technology, co. Ltd.

Add: No 9, weidi road Qixia District Nanjing, 210046, P. R. China.

Email: info@biogot.com

Tel: 0086-025-68037686

Fax: 0086-025-68035151