

## Cdc25C (G210) polyclonal antibody

Catalog: BS1047

Host: Rabbit

Reactivity: Human, Mouse, Rat

### Background:

Cyclin dependent kinases are positively regulated by association with cyclins and negatively regulated by binding to inhibitory subunits. The activity of cyclin dependent kinases is also regulated by the phosphorylation status, which is controlled by the antagonistic action of Wee1 kinase and CDC25 phosphatases. Three CDC25 genes are present in human cells: CDC25A, CDC25B, and CDC25C. These three genes function at different phases of the cell cycle. Whereas CDC25A and CDC25B are expressed throughout the cell cycle, with peak expression in G1 for CDC25A and in both G1 S phase and G2 for CDC25B, CDC25C is predominantly expressed in G2.

### Product:

1 mg/ml in Phosphate buffered saline (PBS) with 0.05% sodium azide, approx. pH 7.2.

### Molecular Weight:

~ 53 kDa

### Swiss-Prot:

P30307

### Purification&Purity:

The antibody was affinity-purified from rabbit antiserum by affinity-chromatography using epitope-specific immunogen and the purity is > 95% (by SDS-PAGE).

### Applications:

WB: 1:500~1:1000

IHC: 1:50~1:200

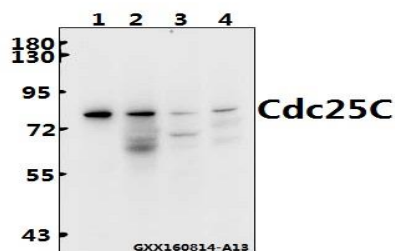
### Storage&Stability:

Store at 4 °C short term. Aliquot and store at -20 °C long term. Avoid freeze-thaw cycles.

### Specificity:

CDC25C (G210) polyclonal antibody detects endogenous levels of CDC25C protein.

### DATA:



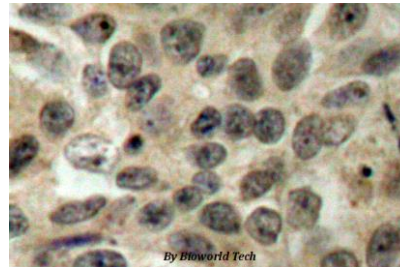
Western blot (WB) analysis of Cdc25C (G210) polyclonal antibody at 1:500 dilution

Lane1:U-87MG whole cell lysate(40ug)

Lane2:CT26 whole cell lysate(40ug)

Lane3:PC12 whole cell lysate(40ug)

Lane4:HCT116 whole cell lysate(40ug)



Immunohistochemistry (IHC) analyzes of CDC25C (G210) pAb in paraffin-embedded human breast carcinoma tissue.

### Note:

For research use only, not for use in diagnostic procedure.

### Bioworld Technology, Inc.

Add: 1660 South Highway 100, Suite 500 St. Louis Park, MN 55416, USA.

Email: [info@bioworld.com](mailto:info@bioworld.com)

Tel: 6123263284

Fax: 6122933841

### Bioworld technology, co. Ltd.

Add: No 9, weidi road Qixia District Nanjing, 210046, P. R. China.

Email: [info@biogot.com](mailto:info@biogot.com)

Tel: 0086-025-68037686

Fax: 0086-025-68035151