

Ephrin-B3 (W251) polyclonal antibody

Catalog: BS1110

Host: Rabbit

Reactivity: Human, Mouse, Rat

BackGround:

Ephrins are the ligands which bind to the Eph receptor subfamily, the largest group of the receptor tyrosine kinase family. Both ephrins and Eph receptors are broadly expressed throughout the ectoderm, mesoderm, and endoderm of vertebrate embryos. Two classes of ephrins exist: Class A ephrins are tethered to the membrane by a GPI linkage and bind primarily to EphA receptors; Class B ephrins contain a membrane-spanning region and bind predominantly to EphB receptors.

Product:

Rabbit IgG, 1mg/ml in PBS with 0.02% sodium azide, 50% glycerol, pH7.2

Molecular Weight:

~ 36 kDa

Swiss-Prot:

Q15768

Purification&Purity:

The antibody was affinity-purified from rabbit antiserum by affinity-chromatography using epitope-specific immunogen and the purity is > 95% (by SDS-PAGE).

Applications:

IHC: 1:50~1:200

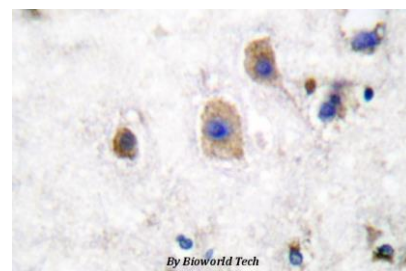
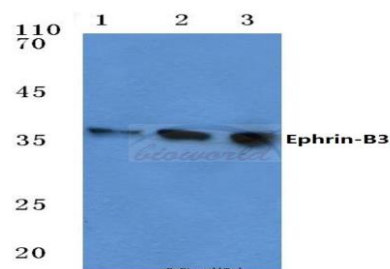
Storage&Stability:

Store at 4 °C short term. Aliquot and store at -20 °C long term. Avoid freeze-thaw cycles.

Specificity:

Ephrin-B3 (W251) polyclonal antibody detects endogenous levels of Ephrin-B3 protein.

DATA:



Immunohistochemistry (IHC) analyzes of Ephrin-B3 (W251) pAb in paraffin-embedded human brain tissue.

Note:

For research use only, not for use in diagnostic procedure.

Bioworld Technology, Inc.

Add: 1660 South Highway 100, Suite 500 St. Louis Park, MN 55416, USA.

Email: info@bioworld.com

Tel: 6123263284

Fax: 6122933841

Bioworld technology, co. Ltd.

Add: No 9, weidi road Qixia District Nanjing, 210046, P. R. China.

Email: info@biogot.com

Tel: 0086-025-68037686

Fax: 0086-025-68035151