

Seprase (K366) polyclonal antibody

Catalog: BS1121

Host: Rabbit

Reactivity: Human, Mouse, Rat

BackGround:

Fibroblast Activation Protein alpha subunit (FAPa or FAP, alpha) is a integral membrane gelatinase belonging to the serine protease family. FAPa is the alpha subunit and DPP4 (CD26) the beta subunit of a heterodimeric membrane-bound proteinase complex also known as 170 kDa Melanoma Membrane Gelatinase, Integral Membrane Serine Proteinase and Seprase, which also has subunit molecular weight as 88 kDa, 95 kDa, 97kDa. Some cells make only FAPa homodimers, some only DPP4 homodimers. The monomer is inactive. FAP, alpha is selectively expressed in reactive stromal fibroblasts of epithelial cancers, granulation tissue of healing wounds, and malignant cells of bone and soft tissue sarcomas. This protein is thought to be involved in the control of fibroblast growth or epithelial-mesenchymal interactions during development, tissue repair, and epithelial carcinogenesis.

Product:

1 mg/ml in Phosphate buffered saline (PBS) with 0.05% sodium azide, approx. pH 7.2.

Molecular Weight:

~ 88 kDa

Swiss-Prot:

Q12884

Purification&Purity:

The antibody was affinity-purified from rabbit antiserum by affinity-chromatography using epitope-specific immunogen and the purity is > 95% (by SDS-PAGE).

Applications:

WB: 1:500~1:1000

IHC: 1:50~1:200

Storage&Stability:

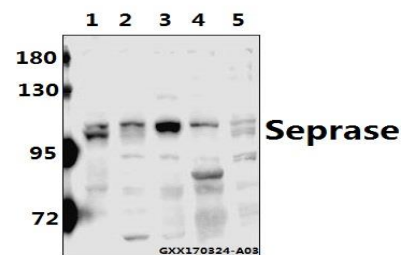
Store at 4 °C short term. Aliquot and store at -20 °C long

term. Avoid freeze-thaw cycles.

Specificity:

Seprase (K366) polyclonal antibody detects endogenous levels of Seprase protein.

DATA:



Western blot (WB) analysis of Seprase (K366) pAb at 1:500 dilution

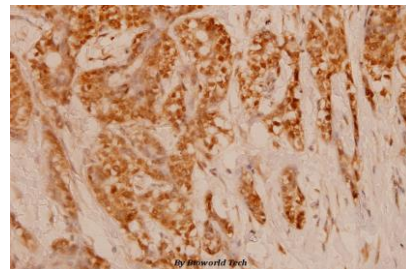
Lane1:U-251MG whole cell lysate(40ug)

Lane2:U-87MG whole cell lysate(40ug)

Lane3:C6 whole cell lysate(40ug)

Lane4:MEF whole cell lysate(40ug)

Lane5:HEK293T whole cell lysate(40ug)



Immunohistochemistry (IHC) analyzes of Seprase (K366) pAb in paraffin-embedded human breast carcinoma tissue at 1:100.

Note:

For research use only, not for use in diagnostic procedure.

Bioworld Technology, Inc.

Add: 1660 South Highway 100, Suite 500 St. Louis Park, MN 55416, USA.

Email: info@bioworld.com

Tel: 6123263284

Fax: 6122933841

Bioworld technology, co. Ltd.

Add: No 9, weidi road Qixia District Nanjing, 210046, P. R. China.

Email: info@biogot.com

Tel: 0086-025-68037686

Fax: 0086-025-68035151