

FAM111A (C20) polyclonal antibody

Catalog: BS1143

Host: Rabbit

Reactivity: Human, Mouse, Rat

Background:

With approximately 135 million base pairs and 1,400 genes, chromosome 11 makes up around 4% of human genomic DNA and is considered a gene and disease association dense chromosome. The chromosome 11 encoded Atm gene is important for regulation of cell cycle arrest and apoptosis following double strand DNA breaks. Atm mutation leads to the disorder known as ataxia telangiectasia. The blood disorders Sickle cell anemia and β thalassemia are caused by HBB gene mutations. Wilms' tumors, WAGR syndrome and Denys-Drash syndrome are associated with mutations of the WT1 gene. Jervell and Lange-Nielsen syndrome, Jacobsen syndrome, Niemann-Pick disease, hereditary angioedema and Smith-Lemli-Opitz syndrome are also associated with defects in chromosome 11. The FAM111A gene product has been provisionally designated FAM111A pending further characterization.

Product:

1 mg/ml in Phosphate buffered saline (PBS) with 0.05% sodium azide, approx. pH 7.3.

Molecular Weight:

~ 70 kDa

Swiss-Prot:

Q96PZ2

Purification & Purity:

The antibody was affinity-purified from rabbit antiserum by affinity-chromatography using epitope-specific immunogen and the purity is > 95% (by SDS-PAGE).

Applications:

WB: 1:500~1:1000

Storage & Stability:

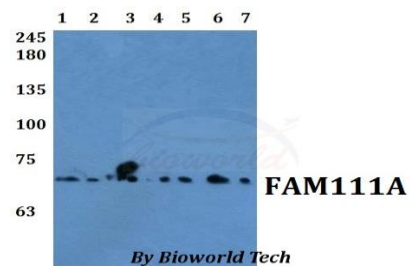
Store at 4 °C short term. Aliquot and store at -20 °C long

term. Avoid freeze-thaw cycles.

Specificity:

FAM111A (C20) polyclonal antibody detects endogenous levels of FAM111A protein.

DATA:



Western blot (WB) analysis of FAM111A (C20) polyclonal antibody at 1:500 dilution Lane1:DLD whole cell lysate

Lane2:MCF-7 whole cell lysate

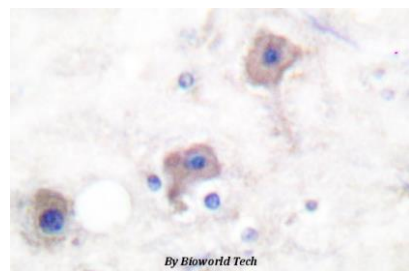
Lane3:A549 whole cell lysate

Lane4:RAW264.7 whole cell lysate

Lane5:sp20 whole cell lysate

Lane6:PC12 whole cell lysate

Lane7:H9C2 whole cell lysate



Note:

For research use only, not for use in diagnostic procedure.

Bioworld Technology, Inc.

Add: 1660 South Highway 100, Suite 500 St. Louis Park, MN 55416, USA.

Email: info@bioworld.com

Tel: 6123263284

Fax: 6122933841

Bioworld technology, co. Ltd.

Add: No 9, weidi road Qixia District Nanjing, 210046, P. R. China.

Email: info@biogot.com

Tel: 0086-025-68037686

Fax: 0086-025-68035151