

Glut 3 (E482) polyclonal antibody

Catalog: BS1150

Host: Rabbit

Reactivity: Human

BackGround:

Glucose is the major source of our energy and there are numerous isoforms of the glucose transporter in mammals, including Glut1, Glut2, Glut3, Glut4, Glut5, Glut6, Glut7, Glut8 and Glut9. The Glut5 gene located on the short arm of human chromosome 1 encodes a 501-amino acid facilitative glucose transporter. Glut5 mRNA is highly expressed in small intestine and to a lesser extent in kidney, skeletal muscle and adipose tissue. Glut5 plays a critical role in fructose absorption in the small intestine and its expression is highly induced when exposed to a fructose-enriched diet. Glut5 transporter expressed in human skeletal muscle is specifically localized to the plasma membrane, where it participates in regulating hexose transfer across the sarcolemma. Glut8, a novel glucose transporter-like protein, exhibits significant sequence similarity with the other members of sugar transporter family. Glut8 comprises 12 putative membrane-spanning helices and several conserved motifs, which are important for transport activity. In human tissues, Glut8 is predominantly expressed in testis and, to a lesser extent, in most other tissues including skeletal muscle, heart, small intestine and brain.

Product:

1 mg/ml in Phosphate buffered saline (PBS) with 0.05% sodium azide, approx. pH 7.2.

Molecular Weight:

~ 54 kDa

Swiss-Prot:

P11169

Purification&Purity:

The antibody was affinity-purified from rabbit antiserum by affinity-chromatography using epitope-specific immunogen and the purity is > 95% (by SDS-PAGE).

Applications:

WB: 1:500~1:1000

IHC: 1:50~1:200

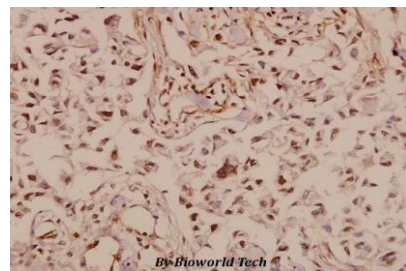
Storage&Stability:

Store at 4 °C short term. Aliquot and store at -20 °C long term. Avoid freeze-thaw cycles.

Specificity:

GLUT3 (E482) polyclonal antibody detects endogenous levels of GLUT3 protein.

DATA:



Immunohistochemistry (IHC) analyzes of Glut 3 (E482) pAb in paraffin-embedded human breast carcinoma tissue at 1:50.

Note:

For research use only, not for use in diagnostic procedure.

Bioworld Technology, Inc.

Add: 1660 South Highway 100, Suite 500 St. Louis Park, MN 55416, USA.

Email: info@bioworld.com

Tel: 6123263284

Fax: 6122933841

Bioworld technology, co. Ltd.

Add: No 9, weidi road Qixia District Nanjing, 210046, P. R. China.

Email: info@biogot.com

Tel: 0086-025-68037686

Fax: 0086-025-68035151