

Cytokeratin 17 (V412) polyclonal antibody

Catalog: BS1203

Host: Rabbit

Reactivity: Human, Mouse, Rat

Background:

Cytokeratin 17 is a member of the Cytokeratin subfamily of intermediate filament proteins (IFPs). It is unique in that it is normally expressed in the basal cells of complex epithelia but not in stratified or simple epithelia. Cytokeratin 17 contains 432 amino acids and is expressed in the nail bed, hair follicle, sebaceous glands and other epidermal appendages. Cytokeratin 17 functions to regulate cell growth and size through its interactions with the adaptor protein 14-3-3-sigma to mediate protein synthesis. Mutations in the gene encoding for Cytokeratin 17 lead to depressed protein translation and smaller sized skin keratinocytes, corresponding to decreased Akt/mTOR signaling activity. Cytokeratin 17 may be a useful marker for cervical stem cell identification, squamous cell carcinoma of the larynx, respiratory syncytial virus and transitional cell carcinomas of the human urinary tract.

Product:

1 mg/ml in Phosphate buffered saline (PBS) with 15 mM sodium azide, approx. pH 7.2.

Molecular Weight:

~ 48 kDa

Swiss-Prot:

Q04695

Purification&Purity:

The antibody was affinity-purified from rabbit antiserum by affinity-chromatography using epitope-specific immunogen and the purity is > 95% (by SDS-PAGE).

Applications:

WB: 1:500~1:1000

IHC: 1:50~1:200

IF: 1:50~1:200

Storage&Stability:

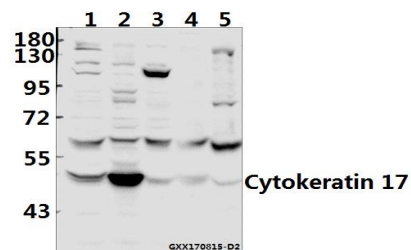
Store at 4 °C short term. Aliquot and store at -20 °C long

term. Avoid freeze-thaw cycles.

Specificity:

Keratin 17 (V412) polyclonal antibody detects endogenous levels of Cytokeratin 17 protein.

DATA:



Western blot (WB) analysis of Cytokeratin 17 (V412) pAb at 1:500 dilution

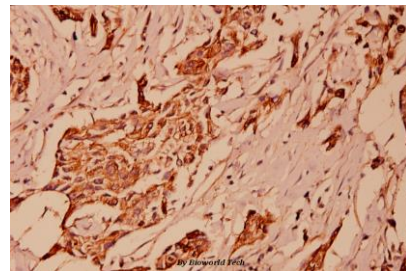
Lane1:PC3 whole cell lysate(40ug)

Lane2:MCF-7 whole cell lysate(40ug)

Lane3:A375 whole cell lysate(40ug)

Lane4:BV2 whole cell lysate(40ug)

Lane5:C6 whole cell lysate(40ug)



Immunohistochemistry (IHC) analyzes of Cytokeratin 17 (V412) pAb in paraffin-embedded human breast carcinoma tissue at 1:100.

Note:

For research use only, not for use in diagnostic procedure.

Bioworld Technology, Inc.

Add: 1660 South Highway 100, Suite 500 St. Louis Park, MN 55416, USA.

Email: info@bioworld.com

Tel: 6123263284

Fax: 6122933841

Bioworld technology, co. Ltd.

Add: No 9, weidi road Qixia District Nanjing, 210046, P. R. China.

Email: info@biogot.com

Tel: 0086-025-68037686

Fax: 0086-025-68035151