

Myc (L56) polyclonal antibody

Catalog: BS1245

Host: Rabbit

Reactivity: Human, Mouse, Rat

Background:

c-Myc-, N-Myc- and L-Myc-encoded proteins function in cell proliferation, differentiation and neoplastic disease. Myc proteins are nuclear proteins with relatively short half lives. Amplification of the c-Myc gene has been found in several types of human tumors including lung, breast and colon carcinomas, while the N-Myc gene has been found amplified in neuroblastomas. The presence of three sequence motifs in the c-Myc COOH terminus, including the leucine zipper, the helix-loop-helix and a basic region provided initial evidence for a sequence-specific binding function.

Product:

1 mg/ml in Phosphate buffered saline (PBS) with 0.05% sodium azide, approx. pH 7.2.

Molecular Weight:

~ 49, 57, 65 kDa

Swiss-Prot:

P01106

Purification&Purity:

The antibody was affinity-purified from rabbit antiserum by affinity-chromatography using epitope-specific immunogen and the purity is > 95% (by SDS-PAGE).

Applications:

WB: 1:500~1:1000

IHC: 1:50~1:200

IF: 1:50~1:200

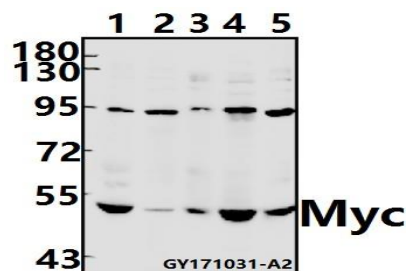
Storage&Stability:

Store at 4 °C short term. Aliquot and store at -20 °C long term. Avoid freeze-thaw cycles.

Specificity:

Myc (L56) polyclonal antibody detects endogenous levels of proto-oncogene c-Myc protein.

DATA:



Western blot (WB) analysis of Myc (L56) pAb at 1:500 dilution

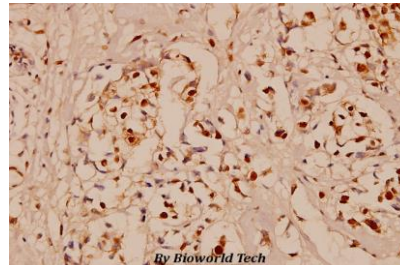
Lane1:BV2 whole cell lysate(40ug)

Lane2:H9C2 whole cell lysate(40ug)

Lane3:MCF-7 whole cell lysate(40ug)

Lane4:A549 whole cell lysate(40ug)

Lane5:HeLa whole cell lysate(40ug)



Immunohistochemistry (IHC) analyzes of Myc (L56) pAb in paraffin-embedded human breast carcinoma tissue at 1:100.

Note:

For research use only, not for use in diagnostic procedure.

Bioworld Technology, Inc.

Add: 1660 South Highway 100, Suite 500 St. Louis Park, MN 55416, USA.

Email: info@bioworld.com

Tel: 6123263284

Fax: 6122933841

Bioworld technology, co. Ltd.

Add: No 9, weidi road Qixia District Nanjing, 210046, P. R. China.

Email: info@biogot.com

Tel: 0086-025-68037686

Fax: 0086-025-68035151