

PRPH (S454) polyclonal antibody

Catalog: BS1292

Host: Rabbit

Reactivity: Human, Mouse, Rat

BackGround:

Peripherin is a type III intermediate filament protein that is expressed in peripheral and some central nervous system (CNS) neurons. Peripherin activation is known to be induced by leukemia inhibitory factor (LIF). LIF activates Peripherin by inducing members of STAT transcription factor family to bind to a specific promoter element in the Peripherin gene. IL-6 is also known to induce Peripherin expression. Although it is not essential for neurite formation, peripherin is necessary for cellular intermediate filament network formation. Peripherin, unlike most intermediate filament proteins, has been reported to be modified by tyrosine phosphorylation

Product:

Rabbit IgG, 1mg/ml in PBS with 0.02% sodium azide, 50% glycerol, pH7.2

Molecular Weight:

~ 55 kDa

Swiss-Prot:

P41219

Purification&Purity:

The antibody was affinity-purified from rabbit antiserum by affinity-chromatography using epitope-specific immunogen and the purity is > 95% (by SDS-PAGE).

Applications:

IHC: 1:50~1:200

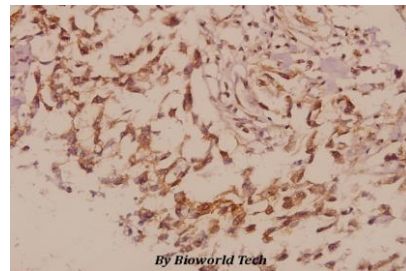
Storage&Stability:

Store at 4 °C short term. Aliquot and store at -20 °C long term. Avoid freeze-thaw cycles.

Specificity:

PRPH (S454) polyclonal antibody detects endogenous levels of Peripherin protein.

DATA:



Immunohistochemistry (IHC) analyzes of PRPH (S454) pAb in paraffin-embedded human breast carcinoma tissue at 1:50.

Note:

For research use only, not for use in diagnostic procedure.

Bioworld Technology, Inc.

Add: 1660 South Highway 100, Suite 500 St. Louis Park, MN 55416, USA.

Email: info@bioworld.com

Tel: 6123263284

Fax: 6122933841

Bioworld technology, co. Ltd.

Add: No 9, weidi road Qixia District Nanjing, 210046, P. R. China.

Email: info@biogot.com

Tel: 0086-025-68037686

Fax: 0086-025-68035151