

## Kv3.2 (P626) polyclonal antibody

Catalog: BS1297

Host: Rabbit

Reactivity: Human, Mouse, Rat

### BackGround:

Voltage-gated K<sup>+</sup> channels in the plasma membrane control the repolarization and the frequency of action potentials in neurons, muscles and other excitable cells. The KV gene family encodes more than 30 proteins that comprise the subunits of the K<sup>+</sup> channels. The subunits vary in their gating and permeation properties, subcellular distribution and expression patterns. Functional KV channels assemble as tetramers consisting of pore-forming  $\alpha$  subunits, which include the KV1, KV2, KV3, KV4 and KV9 proteins, as well as accessory subunits that modify the gating properties of the coexpressed KV subunits. KV3.2 is a multipass membrane protein that regulates the voltage-dependent K<sup>+</sup> permeability of excitable membranes. The tail of KV3.2 may be influential in the targeting of the channel to specific subcellular compartments and/or the regulation of channel activity

### Product:

1 mg/ml in Phosphate buffered saline (PBS) with 0.05% sodium azide, approx. pH 7.2.

### Molecular Weight:

~ 70 kDa

### Swiss-Prot:

Q96PR1

### Purification&Purity:

The antibody was affinity-purified from rabbit antiserum by affinity-chromatography using epitope-specific immunogen and the purity is > 95% (by SDS-PAGE).

### Applications:

WB: 1:500~1:1000

IHC: 1:50~1:200

### Storage&Stability:

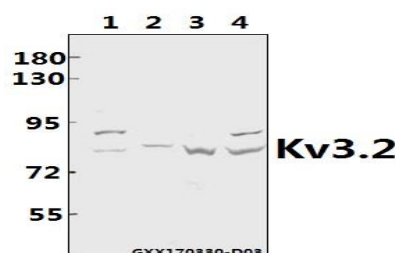
Store at 4 °C short term. Aliquot and store at -20 °C long

term. Avoid freeze-thaw cycles.

### Specificity:

Kv3.2 (P626) polyclonal antibody detects endogenous levels of Kv3.2 protein.

### DATA:



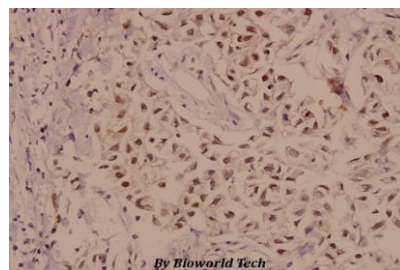
Western blot (WB) analysis of Kv3.2 (P626) polyclonal antibody at 1:500 dilution

Lane1:HeLa whole cell lysate(40ug)

Lane2:MCF-7 whole cell lysate(40ug)

Lane3:CT26 whole cell lysate(40ug)

Lane4:PC12 whole cell lysate(40ug)



Immunohistochemistry (IHC) analyzes of Kv3.2 (P626) pAb in paraffin-embedded human breast carcinoma tissue at 1:50.

### Note:

For research use only, not for use in diagnostic procedure.

### Bioworld Technology, Inc.

Add: 1660 South Highway 100, Suite 500 St. Louis Park, MN 55416, USA.

Email: [info@bioworld.com](mailto:info@bioworld.com)

Tel: 6123263284

Fax: 6122933841

### Bioworld technology, co. Ltd.

Add: No 9, weidi road Qixia District Nanjing, 210046, P. R. China.

Email: [info@biogot.com](mailto:info@biogot.com)

Tel: 0086-025-68037686

Fax: 0086-025-68035151