

RCBTB1 (A277) polyclonal antibody

Catalog: BS1313

Host: Rabbit

Reactivity: Human, Mouse, Rat

Background:

This gene encodes a protein with an N-terminal RCC1 domain and a C-terminal BTB (broad complex, tramtrack and bric-a-brac) domain. In rat, over-expression of this gene in vascular smooth muscle cells induced cellular hypertrophy. In rat, the C-terminus of RCBTB1 interacts with the angiotensin II receptor-1A. In humans, this gene maps to a region of chromosome 13q that is frequently deleted in B-cell chronic lymphocytic leukemia and other lymphoid malignancies.

Product:

1 mg/ml in Phosphate buffered saline (PBS) with 15 mM sodium azide, approx. pH 7.2.

Molecular Weight:

~ 58 kDa

Swiss-Prot:

Q8NDN9

Purification&Purity:

The antibody was affinity-purified from rabbit antiserum by affinity-chromatography using epitope-specific immunogen and the purity is > 95% (by SDS-PAGE).

Applications:

WB: 1:500~1:1000

IHC: 1:50~1:200

Storage&Stability:

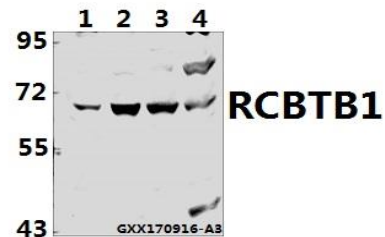
Store at 4 °C short term. Aliquot and store at -20 °C long term. Avoid freeze-thaw cycles.

Specificity:

RCBTB1 (A277) polyclonal antibody detects endogenous

levels of RCBTB1 protein.

DATA:



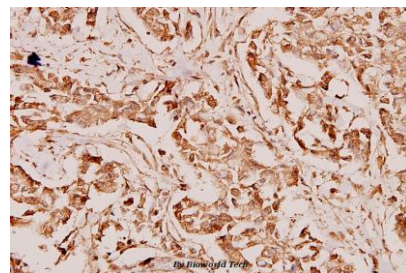
Western blot (WB) analysis of RCBTB1 (A277) pAb at 1:500 dilution

Lane1:Hela whole cell lysate(40ug)

Lane2:L02 whole cell lysate(40ug)

Lane3:CT26 whole cell lysate(40ug)

Lane4:PC12 whole cell lysate(40ug)



Immunohistochemistry (IHC) analyzes of RCBTB1 (A277) pAb in paraffin-embedded human breast carcinoma tissue at 1:100.

Note:

For research use only, not for use in diagnostic procedure.

Bioworld Technology, Inc.

Add: 1660 South Highway 100, Suite 500 St. Louis Park, MN 55416, USA.

Email: info@bioworld.com

Tel: 6123263284

Fax: 6122933841

Bioworld technology, co. Ltd.

Add: No 9, weidi road Qixia District Nanjing, 210046, P. R. China.

Email: info@biogot.com

Tel: 0086-025-68037686

Fax: 0086-025-68035151