

Synuclein-pan (A19) polyclonal antibody

Catalog: BS1349

Host: Rabbit

Reactivity: Human, Mouse, Rat

BackGround:

The synuclein family members, including α -synuclein (also designated NACP for non- β amyloid component) and β -synuclein, are predominantly expressed in the brain and are speculated to be involved in synaptic regulation and neuronal plasticity. α -synuclein is localized to neuronal cell bodies and synapses. α -synuclein was first identified as a component of Alzheimer's disease amyloid plaques. Abnormal platelet function in Alzheimer's disease has been demonstrated. During megakaryocytic differentiation α -synuclein was found to be up-regulated, while β -synuclein is down-regulated, indicating that coordinate expression of synucleins may be important during hematopoietic cell differentiation. A mutant form of α -synuclein has been found in patients with early onset Parkinson's disease.

Product:

Rabbit IgG, 1mg/ml in PBS with 0.02% sodium azide, 50% glycerol, pH7.2

Molecular Weight:

~ 18 kDa

Swiss-Prot:

P37840/O76070/Q16143

Purification&Purity:

The antibody was affinity-purified from rabbit antiserum by affinity-chromatography using epitope-specific immunogen and the purity is > 95% (by SDS-PAGE).

Applications:

WB: 1:500~1:1000

IHC: 1:50~1:200

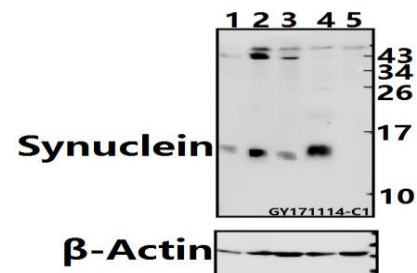
Storage&Stability:

Store at 4 °C short term. Aliquot and store at -20 °C long term. Avoid freeze-thaw cycles.

Specificity:

Synuclein-pan (A19) polyclonal antibody detects endogenous levels of Synuclein-pan (α -synuclein, β -synuclein, γ -synuclein) protein.

DATA:



Western blot (WB) analysis of Synuclein (A19) pAb at 1:500 dilution

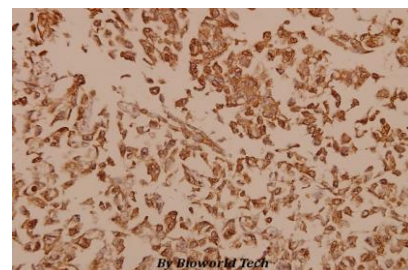
Lane1:Panc1 whole cell lysate(40ug)

Lane2:HEK293T whole cell lysate(40ug)

Lane3:A549 whole cell lysate(40ug)

Lane4:The Brain tissue lysate of Mouse(40ug)

Lane5:The Brain tissue lysate of Rat(40ug)



Immunohistochemistry (IHC) analyzes of Synuclein (A19) pAb in paraffin-embedded human breast carcinoma tissue at 1:50.

Note:

For research use only, not for use in diagnostic procedure.

Bioworld Technology, Inc.

Add: 1660 South Highway 100, Suite 500 St. Louis Park, MN 55416, USA.

Email: info@bioworld.com

Tel: 6123263284

Fax: 6122933841

Bioworld technology, co. Ltd.

Add: No 9, weidi road Qixia District Nanjing, 210046, P. R. China.

Email: info@biogot.com

Tel: 0086-025-68037686

Fax: 0086-025-68035151