

TGase2 (D11) polyclonal antibody

Catalog: BS1367

Host: Rabbit

Reactivity: Human, Mouse, Rat

Background:

Terminally differentiating mammalian epidermal cells acquire an insoluble, 10 to 20 nm thick protein deposit on the intracellular surface of the plasma membrane known as the cross-linked cell envelope (CE). The CE is a component of the epidermis that is generated through formation of disulfide bonds and γ -glutamyl-lysine isopeptide bonds, which are formed by the action of transglutaminases (TGases). TGases are intercellularly localizing, Ca^{2+} -dependent enzymes that catalyze the formation of isopeptide bonds by transferring an amine on to glutamyl residues, thereby cross-linking glutamine residues and lysine residues in substrate proteins. TGases influence numerous biological processes, including blood coagulation, epidermal differentiation, seminal fluid coagulation, fertilization, cell differentiation and apoptosis. Human keratinocyte transglutaminase (TGase1) is a membrane associated, 817 amino acid protein. Human tissue transglutaminase (TGase2) is an endothelial cell specific, 687 amino acid protein.

Product:

Rabbit IgG, 1mg/ml in PBS with 0.02% sodium azide, 50% glycerol, pH7.2

Molecular Weight:

~ 77 kDa

Swiss-Prot:

P21980

Purification&Purity:

The antibody was affinity-purified from rabbit antiserum by affinity-chromatography using epitope-specific immunogen and the purity is > 95% (by SDS-PAGE).

Applications:

WB: 1:500~1:1000

IHC: 1:50~1:200

Storage&Stability:

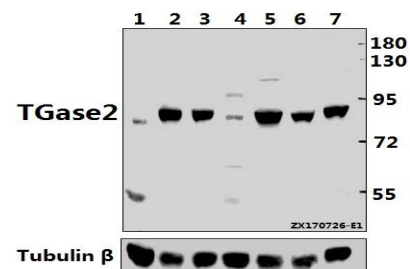
Store at 4 °C short term. Aliquot and store at -20 °C long

term. Avoid freeze-thaw cycles.

Specificity:

Transglutaminase 2 (D11) polyclonal antibody detects endogenous levels of Transglutaminase 2 protein.

DATA:



Western blot (WB) analysis of TGase2 (D11) pAb at 1:500 dilution

Lane1:C6 whole cell lysate(40ug)

Lane2:MCF-7 whole cell lysate(40ug)

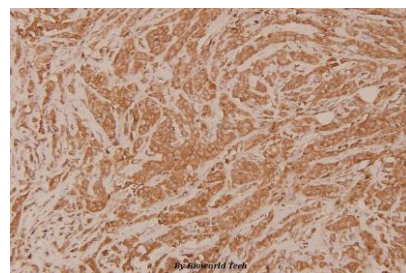
Lane3:SGC7901 whole cell lysate(40ug)

Lane4:HEK293T whole cell lysate(40ug)

Lane5:HepG2 whole cell lysate(40ug)

Lane6:HCT116 whole cell lysate(40ug)

Lane7:L02 whole cell lysate(20ug)



Immunohistochemistry (IHC) analyzes of TGase2 (D11) pAb in paraffin-embedded human breast carcinoma tissue at 1:100.

Note:

For research use only, not for use in diagnostic procedure.

Bioworld Technology, Inc.

Add: 1660 South Highway 100, Suite 500 St. Louis Park, MN 55416, USA.

Email: info@bioworld.com

Tel: 6123263284

Fax: 6122933841

Bioworld technology, co. Ltd.

Add: No 9, weidi road Qixia District Nanjing, 210046, P. R. China.

Email: info@biogol.com

Tel: 0086-025-68037686

Fax: 0086-025-68035151



PRODUCT DATA SHEET

Bioworld Technology, Inc.

Bioworld Technology, Inc.

Add: 1660 South Highway 100, Suite 500 St. Louis Park,
MN 55416, USA.

Email: info@bioworld.com

Tel: 6123263284

Fax: 6122933841

Bioworld technology, co. Ltd.

Add: No 9, weidi road Qixia District Nanjing, 210046,
P. R. China.

Email: info@biogot.com

Tel: 0086-025-68037686

Fax: 0086-025-68035151