

Adducin α (K439) polyclonal antibody

Catalog: BS1435

Host: Rabbit

Reactivity: Human, Mouse, Rat

Background:

Adducins are a family of cytoskeleton proteins encoded by three genes (α , β , γ). Adducin is a protein associated with the inner leaflet of the plasma membrane and is one of the proteins localized at the spectrin-actin junction of the membrane skeleton. The cortical actin cytoskeletal network is lost during apoptosis and Adducins are central in the cortical actin network organization. Adducin α is a cytoskeletal protein involved with sodium-pump activity in the renal tubule and is associated with hypertension. The expression of Adducin α and Adducin γ is ubiquitous in contrast to the restricted expression of Adducin β . Adducin β is expressed at high levels in brain and hematopoietic tissues, such as bone marrow, in humans, and in spleen in mice.

Product:

1 mg/ml in Phosphate buffered saline (PBS) with 0.05% sodium azide, approx. pH 7.2.

Molecular Weight:

~ 81 kDa

Swiss-Prot:

P35611

Purification&Purity:

The antibody was affinity-purified from rabbit antiserum by affinity-chromatography using epitope-specific immunogen and the purity is > 95% (by SDS-PAGE).

Applications:

WB: 1:500~1:1000

IHC: 1:50~1:200

IF: 1:50~1:200

Storage&Stability:

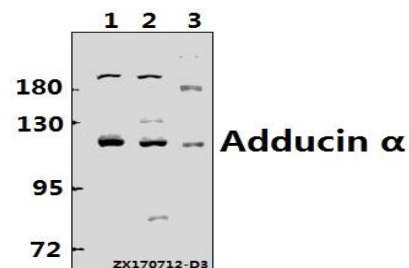
Store at 4 °C short term. Aliquot and store at -20 °C long

term. Avoid freeze-thaw cycles.

Specificity:

Adducin α (K439) polyclonal antibody detects endogenous levels of Adducin α protein.

DATA:

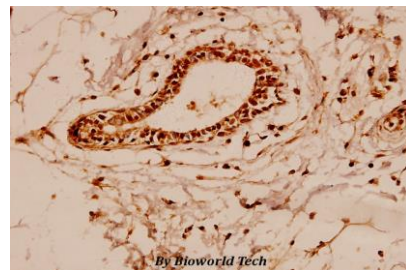


Western blot (WB) analysis of Adducin α (K439) polyclonal antibody at 1:500 dilution

Lane1:K562 whole cell lysate(40ug)

Lane2:HEK293T whole cell lysate(40ug)

Lane3:PC12 whole cell lysate(40ug)



Immunohistochemistry (IHC) analyzes of Adducin α (K439) pAb in paraffin-embedded human breast carcinoma tissue at 1:100.

Note:

For research use only, not for use in diagnostic procedure.

Bioworld Technology, Inc.

Add: 1660 South Highway 100, Suite 500 St. Louis Park, MN 55416, USA.

Email: info@bioworld.com

Tel: 6123263284

Fax: 6122933841

Bioworld technology, co. Ltd.

Add: No 9, weidi road Qixia District Nanjing, 210046, P. R. China.

Email: info@biogot.com

Tel: 0086-025-68037686

Fax: 0086-025-68035151